

AMP: AIR MANAGEMENT BY PACBRAKE

HP625 12 VOLT AIR COMPRESSORS



PRODUCT FEATURES

- Vertical or Horizontal head configuration
- Sealed bearings
- Cast steel cylinder with hard anodized aluminum sleeve
- PTFE piston ring
- Mountable in any orientation

GENERAL DATA

Model	HP10091 (Vertical), HP10092 (Horizontal)
Weight	18.5 lbs
Ambient Temperature Range	-30 to 70°C
Max Duty Cycle	100% (1 hour @ 100 PSI)
Operating Life	500 hrs*
Ingress Protection	IP52 (IP55 w/remote intake)

PNEUMATIC DATA

Rated Flow	3.1 SCFM
Max Working Pressure	150 PSI
Max Restart Pressure	5 PSI

ELECTRICAL/MOTOR DATA

Motor Type	Permanent Magnet DC
Operating Voltage	12 V ± 15%
Maximum Current Draw	42 A
Nominal Power	¼ HP
Nominal Speed	3000 RPM

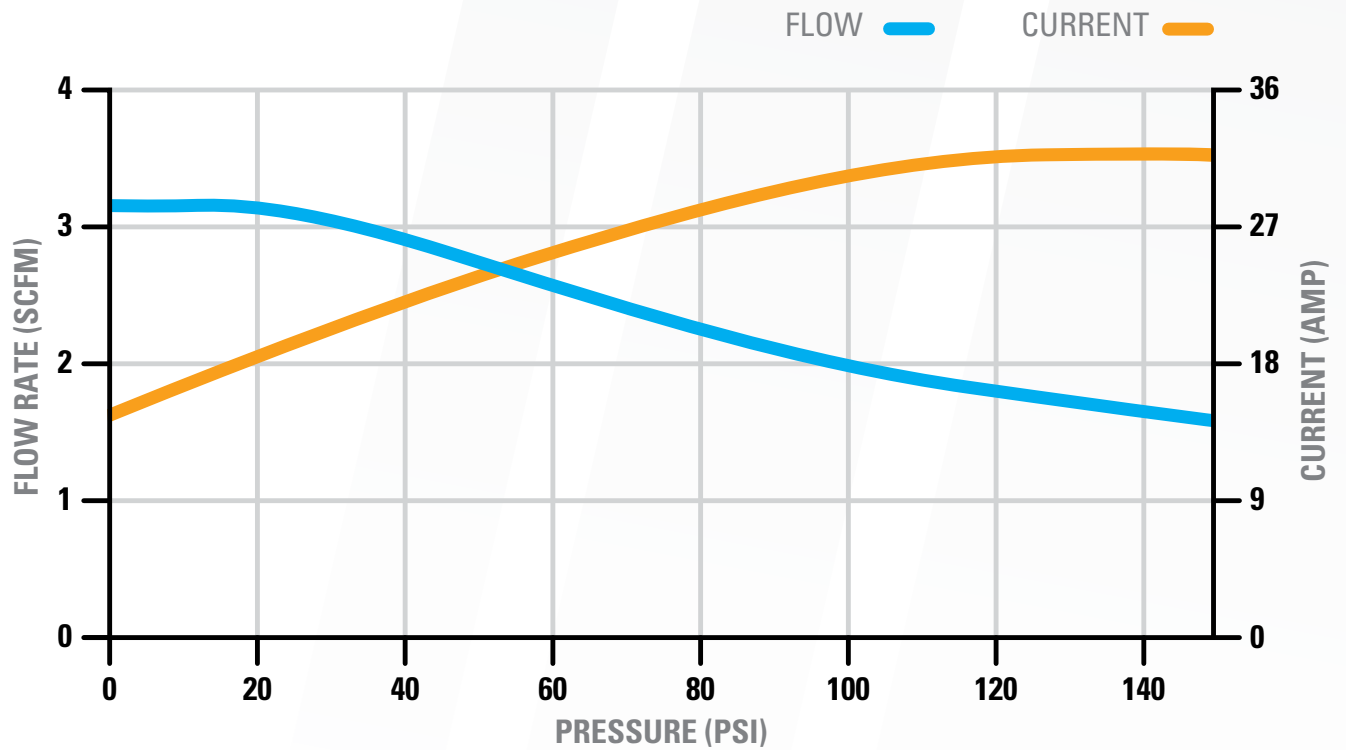
*Operating life may be dependent on application



AMP: AIR MANAGEMENT BY PACBRAKE

HP625 12 VOLT AIR COMPRESSORS

HP625 12V - CURRENT & FLOW RATE VS PRESSURE (13.8V)



TANK FILL TIME HP625 12V

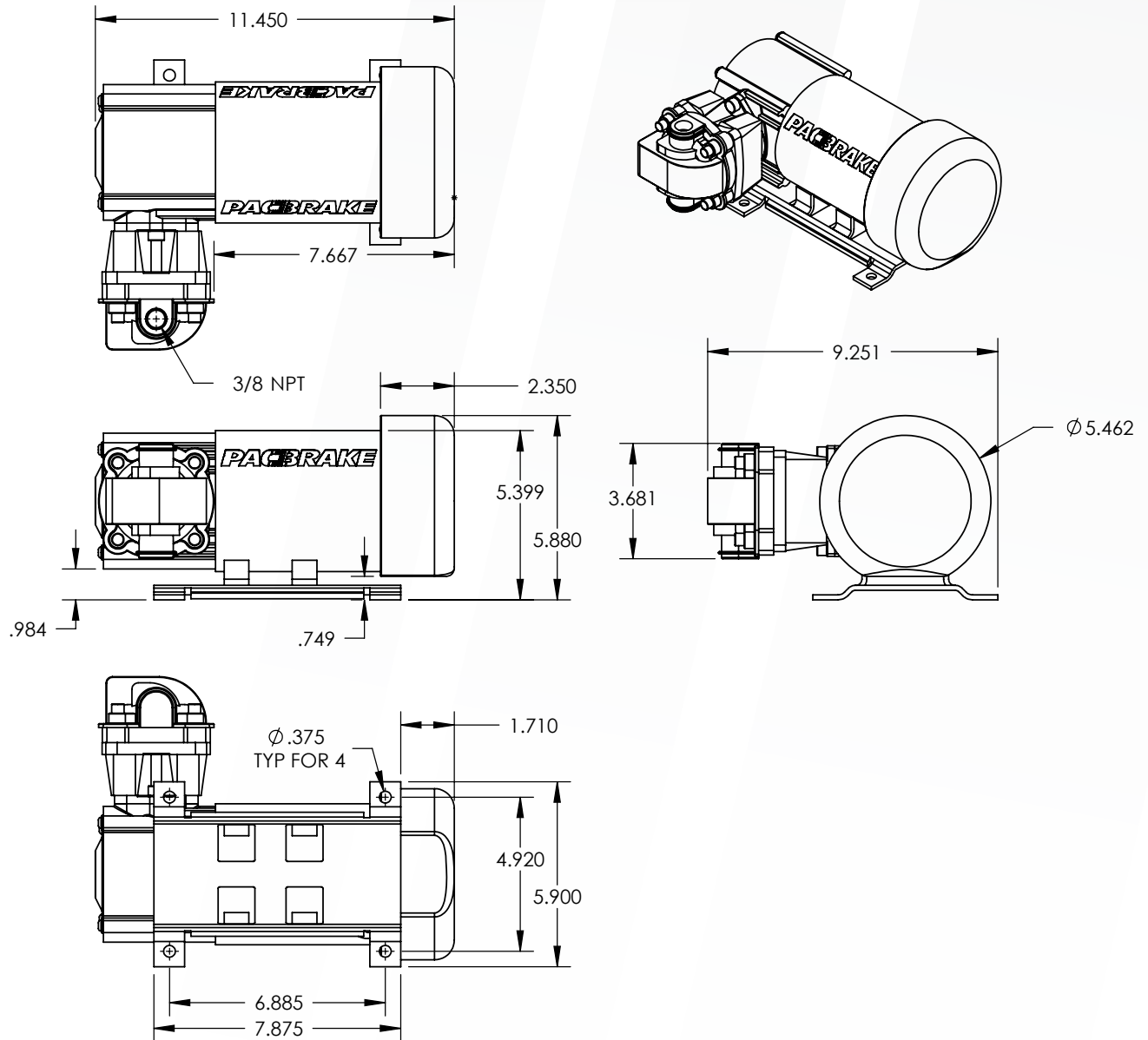
TANK SIZE	TANK PART NUMBER	0 to 100 PSI	100 to 150 PSI
½ Gallon	HP10053	12 seconds	8 seconds
2 ½ Gallon	HP10050	60 seconds	46 seconds
5 Gallon	HP10094	156 seconds	127 seconds



AMP: AIR MANAGEMENT BY PACBRAKE

HP625 12 VOLT AIR COMPRESSORS

HP625 12V (HORIZONTAL) AIR COMPRESSOR DIMENSIONS (IN INCHES)





AMP: AIR MANAGEMENT BY PACBRAKE

HP625 12 VOLT AIR COMPRESSORS

HP625 12V (VERTICAL) AIR COMPRESSOR DIMENSIONS (IN INCHES)

