

# Installation

MANUAL

**PACBRAKE**<sup>®</sup>  
ENGINE & EXHAUST BRAKES



## **PRXB For HINO Trucks**

### **EXHAUST BRAKE**

**PRXB Application:**

**HINO TRUCKS**

**Equipped With:**

**J08E-TA/B 6 cylinder with an existing air source**

## Getting Started

Before starting, be sure you have attained the proper exhaust brake kit for your application. Below is a listing of the Pacbrake kit part numbers and description to determine the correct application.

C40012 - 4 cylinder Hino trucks with standard transmission without an existing air source

C40013 - 6 cylinder Hino trucks with an existing air source

C40014 - 6 cylinder Hino trucks without an existing air source

**NOTE:** These Pacbrake exhaust brakes are designed for Hino Trucks equipped with J08E-TA/B and J05D-TA diesel engines. The exhaust brakes are preset at Pacbrake to Hino's maximum allowable back pressure. Please verify your engine model number to avoid misapplication.

**NOTE:** The engine's ECU requires the exhaust brake circuit be enabled by a Hino dealer.

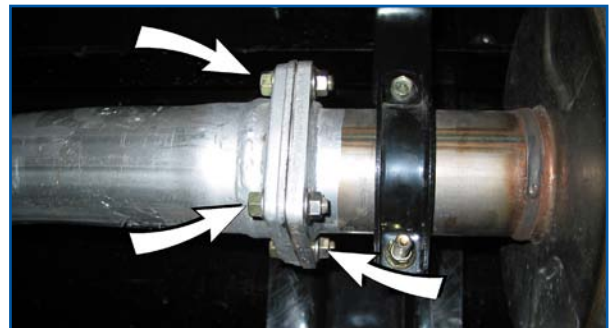
Before starting, check that your kit contains everything shown in the photo.

### KIT FOR VEHICLES WITH AN EXISTING AIR SUPPLY



- 1 Remove the 4 fasteners at the exhaust connection in front of the muffler. Using the offset muffler hangers supplied to replace the factory hangers, relocate the muffler 2.5 inches towards the rear of the vehicle, this will allow for the Pacbrake exhaust brake. Two socket head shoulder bolts are supplied for the replacement muffler hangers.

**NOTE:** Some vehicles have 3 muffler hangers, for these the factory rear hanger will be reused. At the rear hanger, loosen the two capscrews that clamp the exhaust pipe, slide the pipe towards the rear of the vehicle. Once the exhaust brake is installed, the two forward hangers replaced and the exhaust system adjusted, tighten the two capscrews clamping the exhaust pipe to the rear hanger.





- 6 Remove the air filter restriction gauge in the air intake system and install the "TEE" fitting supplied using thread sealant. Connect the air cylinder breather hose installed in step 3 to the barbed leg of the fitting and reinstall the restriction gauge. Secure the breather hose with tie-straps provided.



## Electrical Installation, All Vehicles

**NOTE:** Disconnect the batteries before removing the connectors from the ECU.

LOCATE THE WIRING SCHEMATIC ON PAGE 7

- 7 Remove the fuse panel cover on the passenger side of the dash. The engine ECU is the lower unit, the ABS ECU is above the engine ECU. Dash switch installation, choose a spare location that is convenient for the driver to access, remove the blank plate. Locate the dash switch harness supplied in the kit, connect the wires as shown in the wiring schematic and install the switch. Locate a chassis ground stud for the BLACK wire, this is for the light in the switch. Route the harness across the dash to the fuse panel. Provided is a decal to identify the switch, peel the paper off the back of the decal and apply above or below the switch.



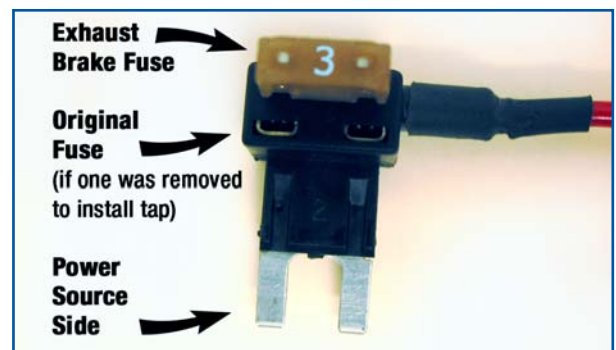
- 8 At the engine ECU, locate the connector shown in the electrical schematic on page 7. Remove the connector from the ECU. The connector locking device needs to be released before the Pacbrake terminals can be installed. A square hole exists in each side of the connector, insert a small screwdriver into the hole pushing against the tab, repeat on the opposite side, the terminal locking device should raise by 1 to 2 mm but is not removable, this will allow the terminals to be installed. Insert the Green Pacbrake wire into port B15, the Black wire into Port B24 and the Blue wire into port B2. Once all three Pacbrake wires are installed, push the locking device down to lock the terminals in place. An audible click should be heard to ensure the locking device is locked. Install the connector back into the ECU.



9 Mount the relay receptacles to one of the ECU mounting bracket capscrews, a replacement capscrew is provided. All vehicles require two relays, one for throttle control and the other is for ABS (Anti-lock Brake System).



10 At the fuse panel, locate the hydraulic brake fuse location, it should be an ignition source and available to accept the fuse tap provided. The fuse tap must be installed in a certain manner for the fuse to protect the system. Using a test light, determine which terminal in the fuse panel is the ignition power input. The fuse tap terminal opposite the wiring harness side must be installed into the power source terminal for the fuse to be effective. If no empty ignition power locations are available in the fuse panel, choose an existing ignition circuit, remove the existing fuse, install the fuse tap, **install the original fuse in the lower position of the fuse tap.**



11 The ABS ECU has a Pacbrake disable circuit to turn the exhaust brake off in the event of wheel lock-up, therefore we must connect to the ABS ECU. Locate the ABS ECU in the ECU rack. Remove the 15 pin connector from the ABS ECU, pull the purple lock tab out allowing the terminal on the yellow wire to be installed in port 14 of the connector, then push the purple lock tab in to secure the terminal. Install the connector back into the ABS ECU. Consult the electrical schematic on page 7 for the ABS connector numbering sequence.



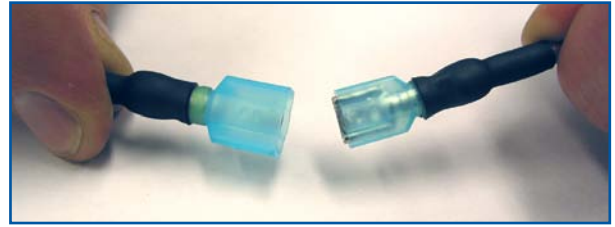
12 Feed all the unconnected wires through the firewall boot in the upper passengers side of the firewall into the engine compartment. Some model trucks have firewall grommet near the accelerator pedal under the floor mat that can be used. Tape the firewall grommet to provide a water tight seal. Using the tie-straps provided secure the wiring harness and reinstall the dash panel.



- 13 Route the GREEN wire of the Pacbrake harness to the solenoid valve BLACK wire and connect. The terminal is filled with dielectric compound to prevent corrosion, cover the connector with electrical tape. Using the loom and tie-straps provided, protect and secure the harness.

Congratulations, you have completed the Pacbrake installation.

**Reminder....The exhaust brake circuit in the engine ECU will require it to be enabled by an authorized Hino Dealer only.**



## Road Testing

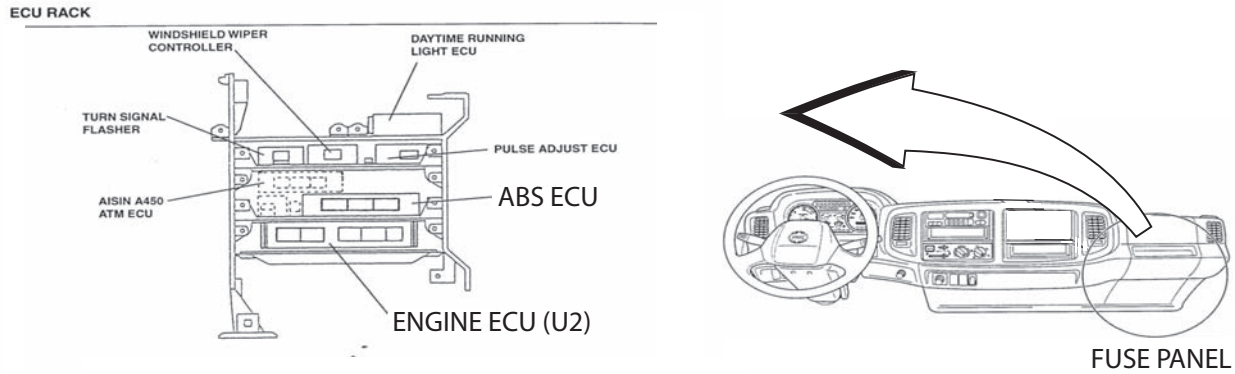
A road test should be performed to check the operation of the Pacbrake exhaust brake. Warm the engine to operating temperature, turn the Pacbrake dash switch to "ON". Attain road speed and release the throttle, the exhaust brake should apply slowing the vehicle. The ABS relay should disengage the Pacbrake if wheel skid occurs.

Vehicles equipped with Allison transmissions should automatically downshift to a lower gear when the Pacbrake is applied.

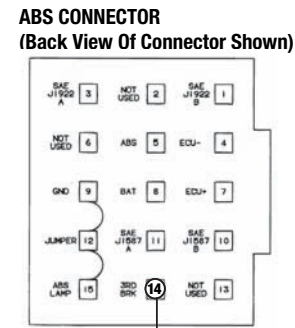
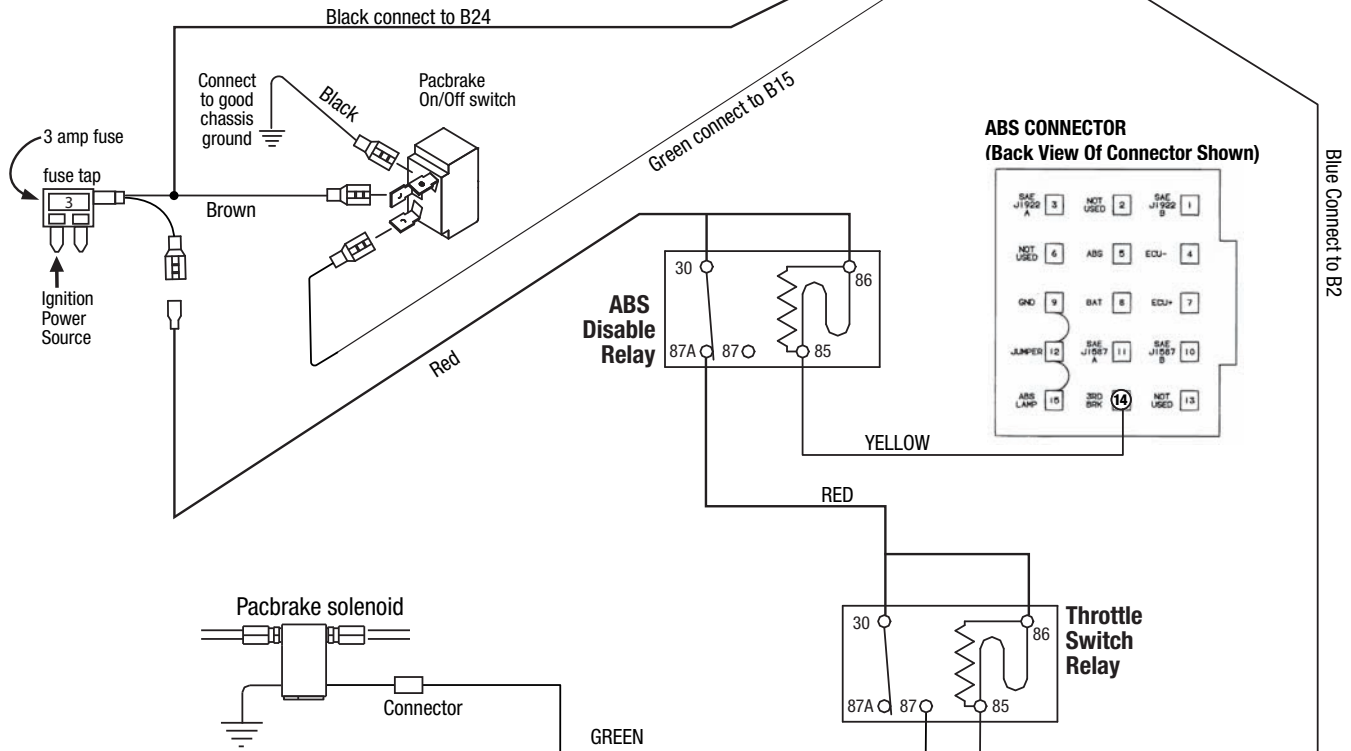
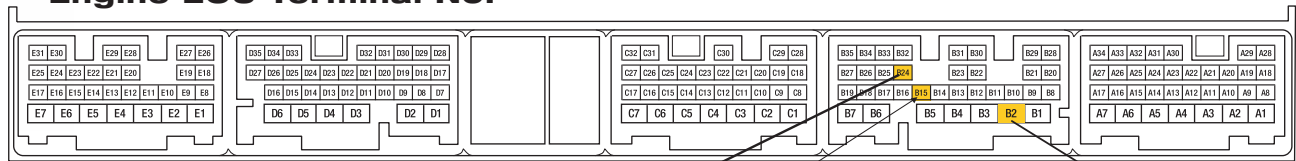
**For technical assistance or customer service, please call toll free 1-800-663-0096.**

## Hino Electrical Schematic

Vehicles With An Existing Air System



### Engine ECU Terminal No.





**Pacbrake Company**

**toll-free:** 800-663-0096 **phone:** 604-882-0183 **fax:** 604-882-9278 **e-mail:** [info@pacbrake.com](mailto:info@pacbrake.com) **Internet:** [www.pacbrake.com](http://www.pacbrake.com)

**Canada:** 19594 96 Ave. Surrey BC V4N 4C3 **USA:** 250 H St. Box 1822 Blaine WA 98231-1822