

LOADLEASH: POTENTIAL OIL FITTING LEAKAGE

Cummins 6.7L ISB and Paccar PX-7 engines

The LoadLeash Engine Brake, installed on Cummins 6.7L ISB and Paccar PX-7 engines, have a potential oil leak issue due to over tightening of the 1/8" NPT oil feed fitting.

It is imperative to immediately inspect the LoadLeash housing for potential cracks / oil leaks at the oil feed port of the housing.

Inspection of this oil feed port does not require removal of the LoadLeash housing, inspection may be accomplished using a mirror or borescope.

HOUSING PART # AFFECTED:

- P55102

LOADLEASH KIT # AFFECTED:

- P55003
- P55004
- P55005

The 1/8" NPT fitting of the oil feed has a leakage potential due to improper installation.

FIGURE 1:

Affected Oil Port 1/8" NPT fitting.

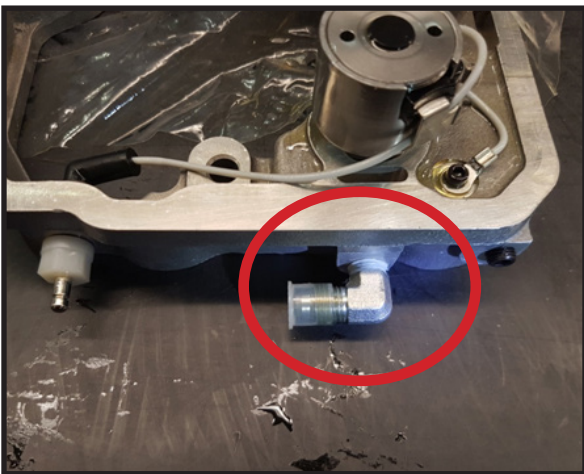
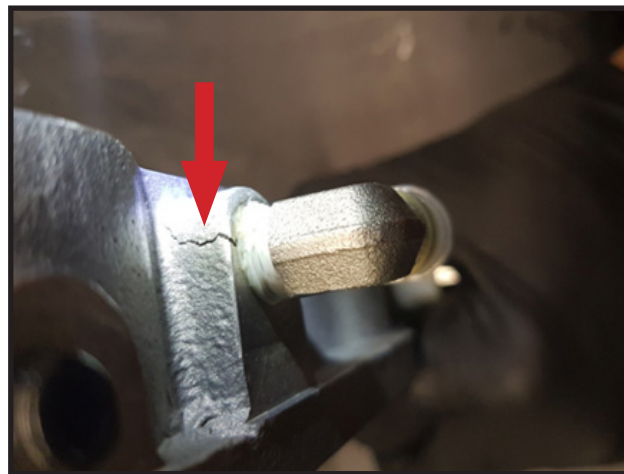


FIGURE 2:

Over torqued 1/8" NPT fitting.



Please contact Pacbrake warranty department by phone: [800.663.0096](tel:800.663.0096) or email: warranty@pacbrake.com if you have a LoadLeash housing affected by this issue.

- PACBRAKE SERVICE