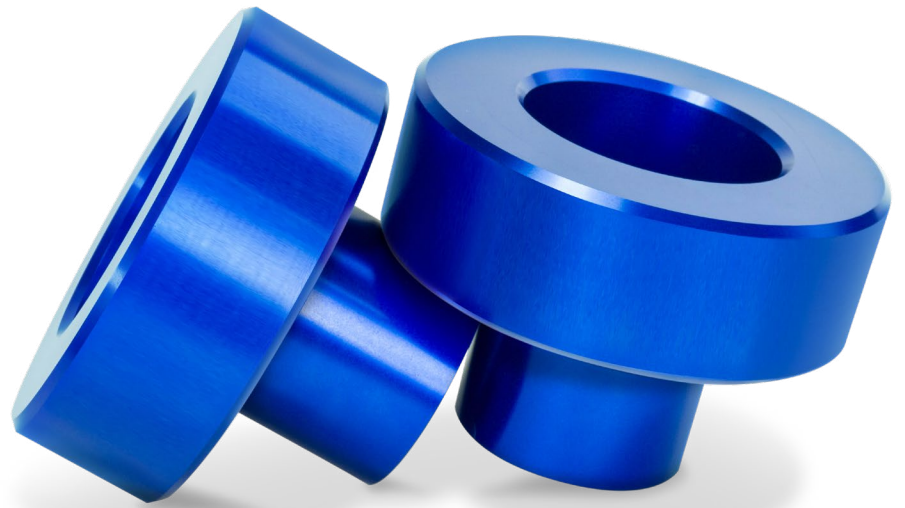


# Installation Manual



## 10689 KIT

**2.5" Leveling Kit** Ford F-250/F-350 Super Duty (4WD)\*  
*Will not fit Tremor models*

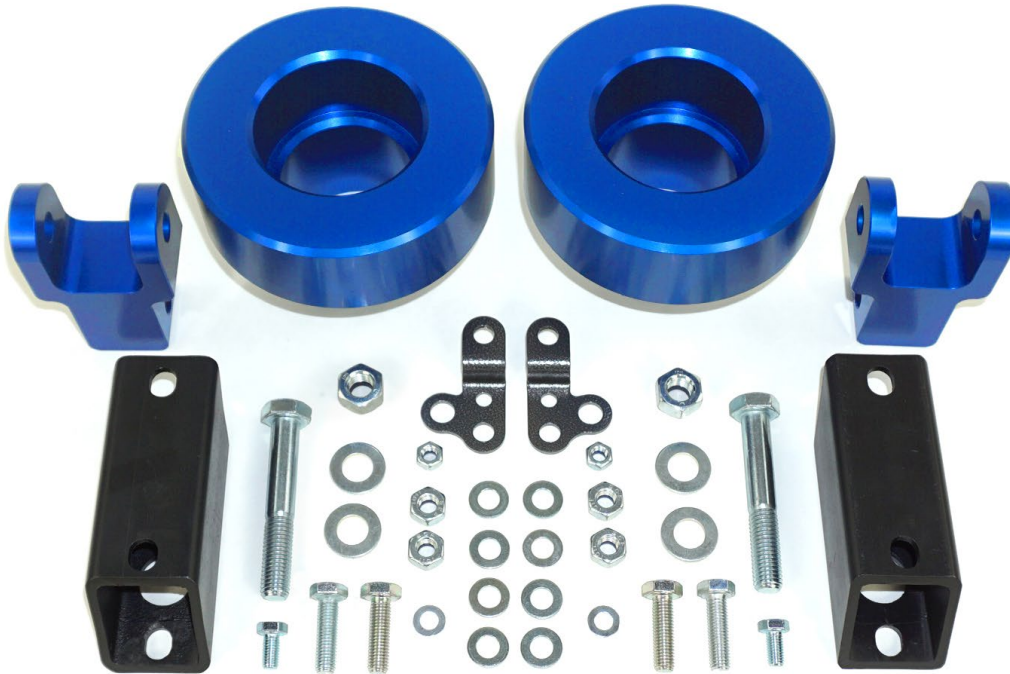
*Levels the stance of your vehicle by raising the front end a fixed amount, increasing both the ground and wheel well clearance for the installation of larger wheels.*

\* See application guide for proper fitment.

L6640\_REV2\_03.31.2026

**Thank you and congratulations on the purchase of a Leveling Kit. Please read the entire manual prior to starting the installation to ensure you can complete it once started.**

**KIT LAYOUT**



**KIT CONTENTS**

*Please make sure all the items below are included in your kit before starting the installation. An explosion diagram for the kit can be found on the following page*

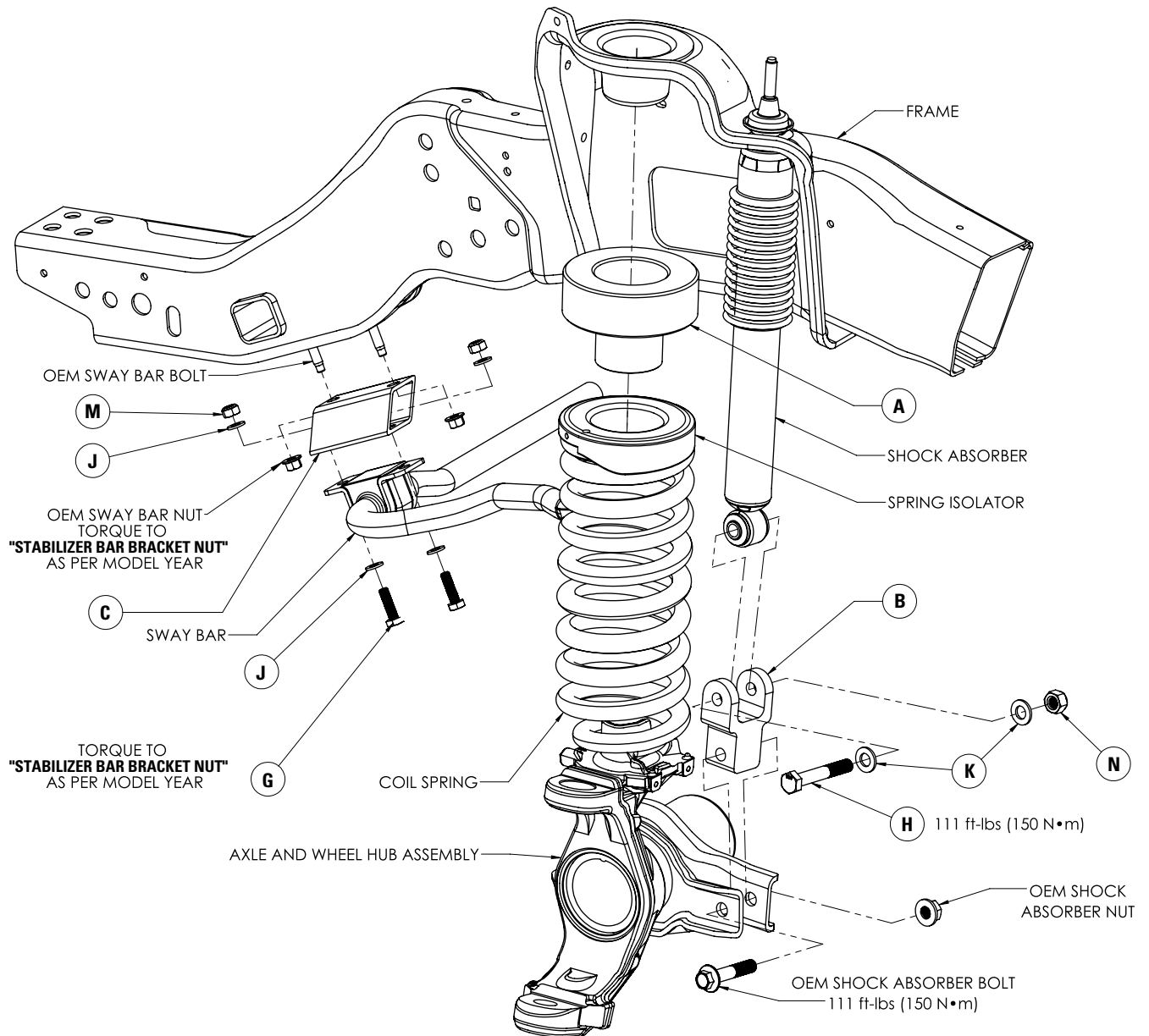
KIT CONTENTS		QTY	PART #
<b>A</b>	Coil Spring Spacer	2	HP1468
<b>B</b>	Shock Extension	2	HP1469
<b>C</b>	Bracket, Sway Bar Drop	2	HP1778
<b>D</b>	Bracket, Brake Line ( <i>Passenger Side</i> )	1	HP1472
<b>E</b>	Bracket, Brake Line ( <i>Driver Side</i> )	1	HP1473
<b>F</b>	Bolt, M8 x 1.25 x 16 mm Hex Head	2	HP1146
<b>G</b>	Bolt, M10 x 1.5 x 35 mm Hex Head	4	HP1134
<b>H</b>	Bolt, M14 x 2 x 90 mm Hex Head	2	HP1465
<b>I</b>	Washer, M8 Flat	2	C10473
<b>J</b>	Washer, M10 Flat	8	HP1573
<b>K</b>	Washer, M14 Flat	4	HP1466
<b>L</b>	Nut, M8 x 1.25 Nyloc	2	C11377
<b>M</b>	Nut, M10 x 1.5 Flange	4	HP1574
<b>N</b>	Nut, M14 x 2 Nylon Lock	2	HP1467

**REQUIRED TOOLS**

- Hoist or Floor Jack
- Safety Stands
- Safety Glasses
- Torque Wrench
- Standard Combination Wrenches
- 7/32" Hex Allen Wrench
- 1-1/8" Wrench or Deep Socket
- Metric & Standard
- Sockets Ratchet

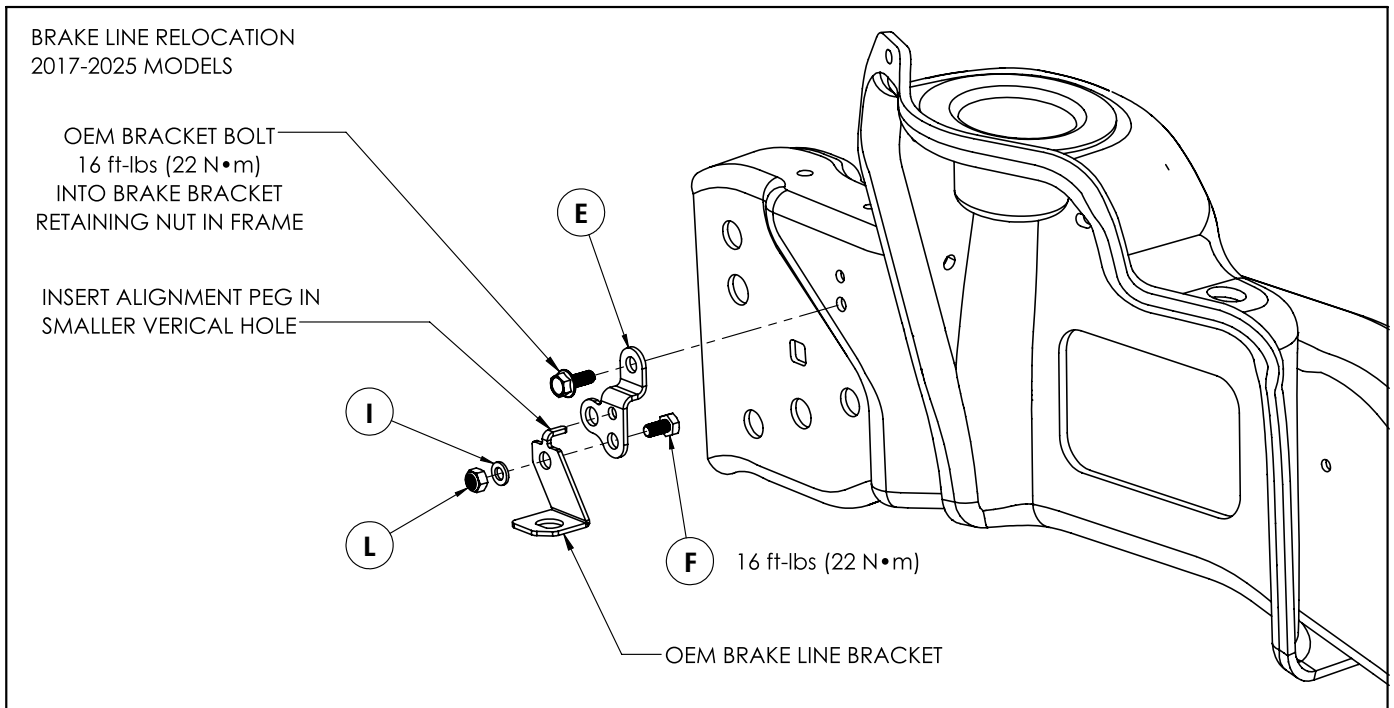
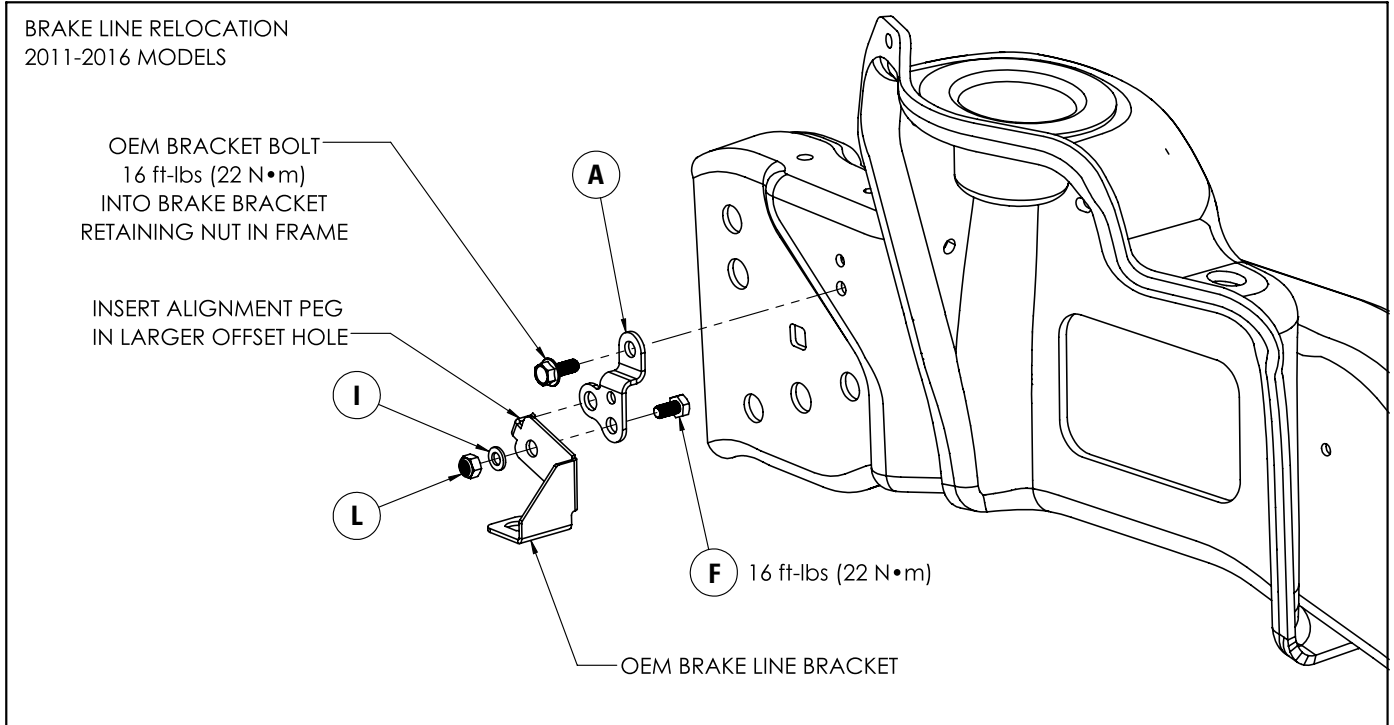
Please make sure all the items shown in this explosion diagram are provided in your kit before starting the installation.

**KIT ASSEMBLY SHOWN:**



OEM TORQUE SPECIFICATIONS		
MODEL YEAR	2011-2016	2017-2025
SHOCK ABSORBER UPPER NUT	46 ft-lbs (63 N•m)	59 ft-lbs (80 N•m)
SHOCK ABSORBER LOWER BOLT	111 ft-lbs (150 N•m)	
STABILIZER BAR END LINK NUT	52 ft-lbs (70 N•m)	59 ft-lbs (80 N•m)
STABILIZER BAR BRACKET NUT	35 ft-lbs (48 N•m)	41 ft-lbs (55 N•m)
RADIUS ARM TO FRAME NUT	222 ft-lbs (300 N•m)	
TRACK BAR TO FRAME BOLT	406 ft-lbs (550 N•m)	

**BRAKE LINE RELOCATION ASSEMBLY SHOWN:**



**BEFORE STARTING THE INSTALLATION:**

*Safety Warning!*

Altering the suspension system of your vehicle may cause it to handle differently than it did from the factory. Larger wheel and tire combinations may increase the leverage on the suspension and steering components. This changes the way your vehicles handles and responds to abrupt maneuvers. Operate your vehicle at reduced speeds in all conditions to prevent loss of control. Failure to do so may result in serious injury. It is not recommend to combine the use of suspension lifts, body lifts, or other lifting methods.

*Installation Warning!*

Use caution when disassembling and reassembling the vehicle. The proceeding instructions are guidelines only, the installer is responsible for ensuring that the vehicle is safe for use after performing the installation. It is recommended to use the factory service manual for the model/year of the vehicle when disassembling and assembling factory related components.

All OEM fasteners are to be discarded after removal and replaced using same or equivalent parts as per Ford motor company workshop manual instructions.

Suspension components that use rubber or urethane bushings should be tightened with the vehicle at normal ride height. This will prevent premature wear or failure of the bushing. Prevent the suspension components from overextension by supporting them with a jack.

**PLEASE NOTE:** Due to the suspension geometry and vehicle tolerances, the amount of lift is a base figure. **Spacer thickness does not equate to the amount of lift due to the suspension geometry.** For example: a 1" thick spacer may provide a 2" lift. Always measure the vehicle ride height at all 4 corners before and after installation to ensure the results are as expected.

**WHEEL ALIGNMENT AND HEADLIGHT ADJUSTMENT**

It is necessary to have a proper and professional wheel alignment performed by a certified alignment technician to align the vehicle to factory specifications. After the installation is complete, check to ensure that the vehicle's headlights are aimed properly. If not, a headlight alignment is required.



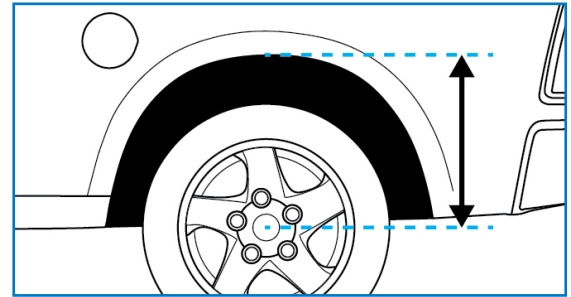
## INSTALLATION INSTRUCTIONS

### 1 MEASURE STOCK RIDE HEIGHT

Park the vehicle on a level surface.

Using a measuring tape, measure the distance between the center of the wheel hub and the bottom of the fender well (as shown in Figure 1). This will give you your ride height.

Note the ride height for all four corners of the vehicle.



1

### 2 REMOVE FRONT WHEELS

Place wheel chocks in front of and behind both rear wheels.

Raise front of the truck high enough to remove both wheels and attain a comfortable working height.

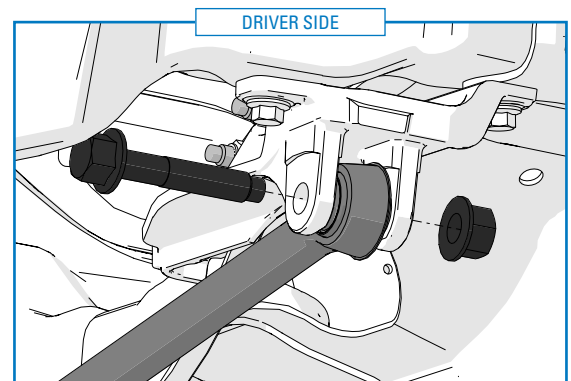
Place two jack stands under the vehicles frame and lower vehicle until the frame is supported by the jack stands and remove front wheels.



2

### 3 DISCONNECT THE TRACK BAR

Disconnect the track bar from the track bar mount that is connected to the frame on the driver side of the vehicle (as shown in Figure 3).



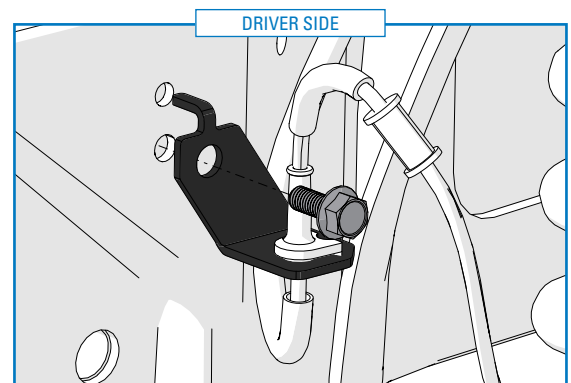
3

### 4 INSTALL THE BRAKE LINE DROP BRACKET

Remove the factory OE brake line support bracket from both the driver and passenger side of the vehicle (see Figure 4 for reference).

Use the BRAKE LINE RELOCATION ASSEMBLY diagrams (shown on Page 4 of this manual) and the supplied fasteners, install the brake line drop brackets and torque hardware to the listed valves.

**!** **PLEASE NOTE:** Perform a steering sweep and inspect the front brake lines for adequate slack. Failure to perform this check may result in inadequate performance.



4

## 5 DISCONNECTING & REATTACHING THE SWAY BAR

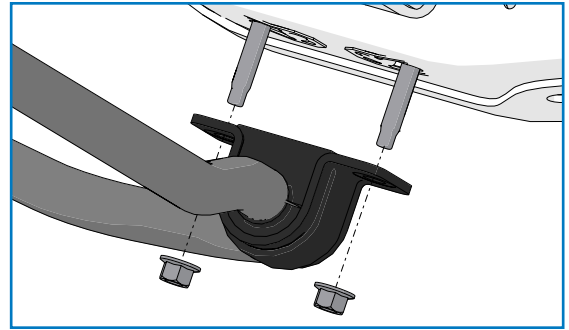
Disconnect the sway bar from the frame on both the driver and passenger side of the vehicle (as shown in Figure 5A).

Install the provided sway bar drop brackets (as shown with a white asterisk in Figure 5B) to the frame using the OE sway bar bolt and nut.

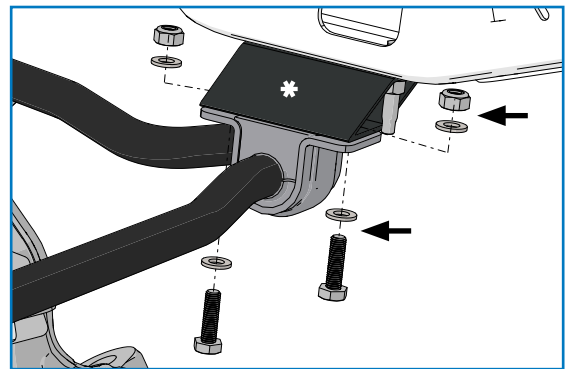
Torque the hardware to the "STABILIZER BAR BRACKET NUT" values listed in the OEM TORQUE SPECIFICATIONS chart (found on Page 3).

Raise the sway bar up and attach it to the sway bar drop bracket using the M10 nuts that are provided in this kit (parts highlighted with black arrows in Figure 5B).

Torque the M10 nuts to the "STABILIZER BAR BRACKET NUT" values listed in the OEM TORQUE SPECIFICATIONS chart (found on Page 3).



5A

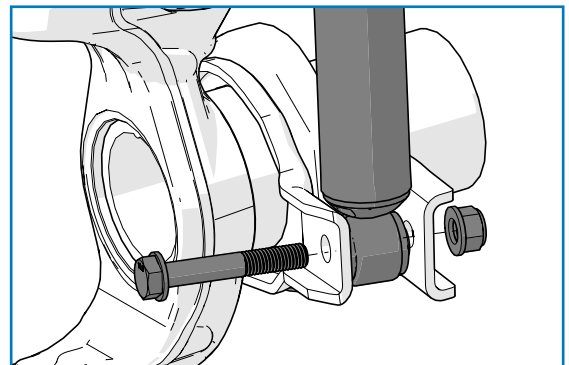


5B

## 6 DISCONNECT THE FRONT LOWER SHOCK BOLTS

Disconnect the lower shock bolts on the driver and passenger side (as shown in Figure 6).

⊕ *It may be necessary to raise or lower the floor jack under the axle slightly (this relieves the pressure being applied by the shock on the bolt) making the removal of the lower shock bolts easier.*



6

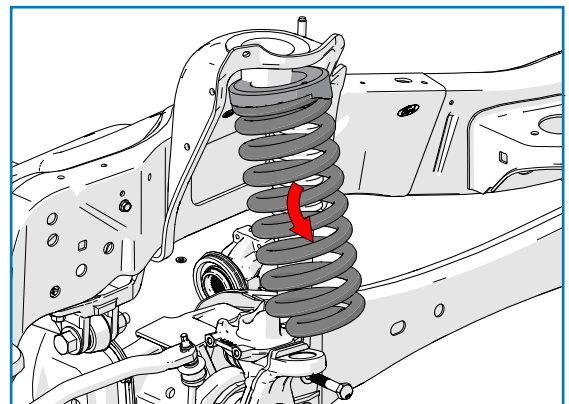
## 7 REMOVE THE COIL SPRING

Lower the front axle until there is enough clearance to safely remove the coil spring, and coil pad from the vehicle.

⊕ *You may need to disconnect the sway bar end links to allow the axle to drop further.*

**PLEASE NOTE:** Replacement sway bar end link nuts are not provided in this kit.

Repeat this step for both the driver and passenger side of the vehicle.



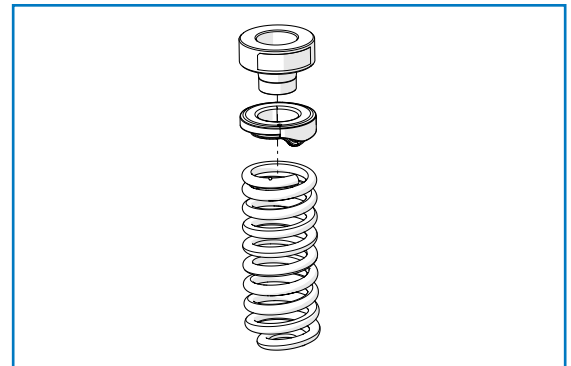
7

**8 INSTALL THE COIL SPRING SPACER**

Install the coil spring spacer, coil pad, and the coil spring back into the truck (part assembly shown in Figure 8).

Slowly raise the axle until the bottom of the spring and the spring seat on the axle are nearly contacting each other.

Rotate the spring in order to clock the spring into the proper position.



8

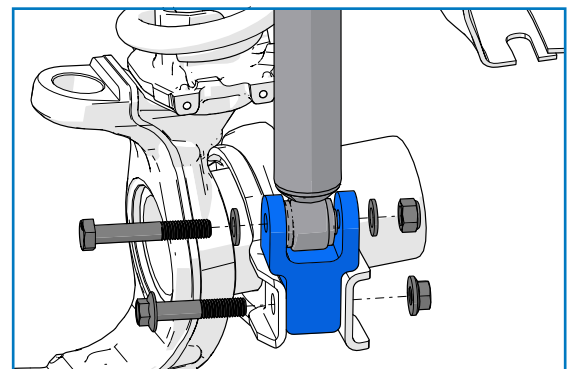
**9 REINSTALL THE SHOCK**

Install the provided shock extension bracket onto the factory OE mounting bracket and use the factory OE fasteners to attach the new bracket (as shown in Figure 9).

Torque the fasteners to the "SHOCK ABSORBER LOWER BOLT" values listed in the OEM TORQUE SPECIFICATIONS chart (found on Page 3).

Raise the axle such that the hole in the shock extension lines up with the hole located at the bottom of the shock absorber.

Install the provided M14 hardware and torque to the "SHOCK ABSORBER LOWER BOLT" values listed in the OEM TORQUE SPECIFICATIONS chart (found on Page 3).

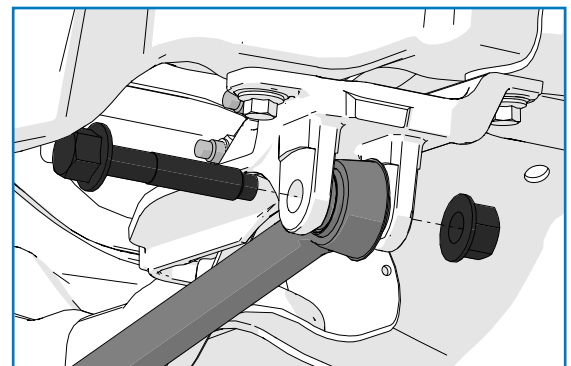


9

**10 REINSTALL THE TRACK BAR**

Reconnect the track bar to the frame track mount using the OE hardware (as shown in Figure 10).

Torque the hardware to the "TRACK BAR TO FRAME BOLT" values listed in the OEM TORQUE SPECIFICATIONS chart (found on Page 3).



9

**12 REINSTALL THE WHEELS**

Install the wheels and torque them to factory specification.

Raise the vehicle in order to remove the jack stands from under the frame and then carefully lower the vehicle back to the ground.

Using a measuring tape, measure the distance between the center of the wheel hub and the bottom of the fender well for all four corners.

Note the distance between the wheel hub and the fender well, this is your new ride height. Ensure the results are as expected.

.....

**POST INSTALLATION WARNING**

After the kit installation is complete and the vehicle is on the ground at its normal ride height, roll the vehicle backward and forward to settle the suspension. Tighten all components containing rubber bushings to the specified torque values. Verify adequate tire, wheel, brake line and ABS wire clearance by turning the front wheels completely to the left and then to the right. Ensure brake/ABS lines are not stretched when the suspension is at full droop. Test and inspect steering, brake and suspension components. Vehicle damage may result if the post installation checks are not performed.

**VEHICLE HANDLING WARNING**

Larger wheel and tire combinations may increase the leverage on the suspension and steering components. Increasing the height of your vehicle increases the likelihood of rollover or loss of control during abrupt maneuvers, especially at high speeds. Operate your vehicle at reduced speeds in all conditions to prevent loss of control. Failure to do so may result in serious injury.

**WHEEL ALIGNMENT & HEADLIGHT ADJUSTMENT**

After the kit installation is complete, a professional wheel alignment must be performed by a certified alignment technician to re-align the vehicle to within factory specifications. Additionally, ensure that the vehicles headlights are aimed properly. If not, a headlight alignment is required as well. If not properly aligned it can cause increased tire and suspension component wear.

**VEHICLE RE-TORQUE & SAFETY INSPECTION**

After the kit installation and adjustments have been completed and within 50 miles of driving, perform a check over of all applicable fasteners and hardware to ensure they are adequately tightened to the specifications given (or as noted in the vehicle's factory service manual).

**WARRANTY**

To be eligible for warranty, the owner must submit their warranty card or register online within 30 days of the purchase date.

.....