

Pacbrake BRAVO™ Wireless Air Controls give you the ability to adjust your air spring pressure from your mobile device with the touch of a button. Connection is established via Bluetooth, allowing for system operation without the need for internet or cell service. Using the BRAVO™ Wireless Air Control App from Pacbrake, air spring pressure can be adjusted with real time air pressure feedback. The app features built in memory presets to store and quickly recall desired spring pressures for user convenience.



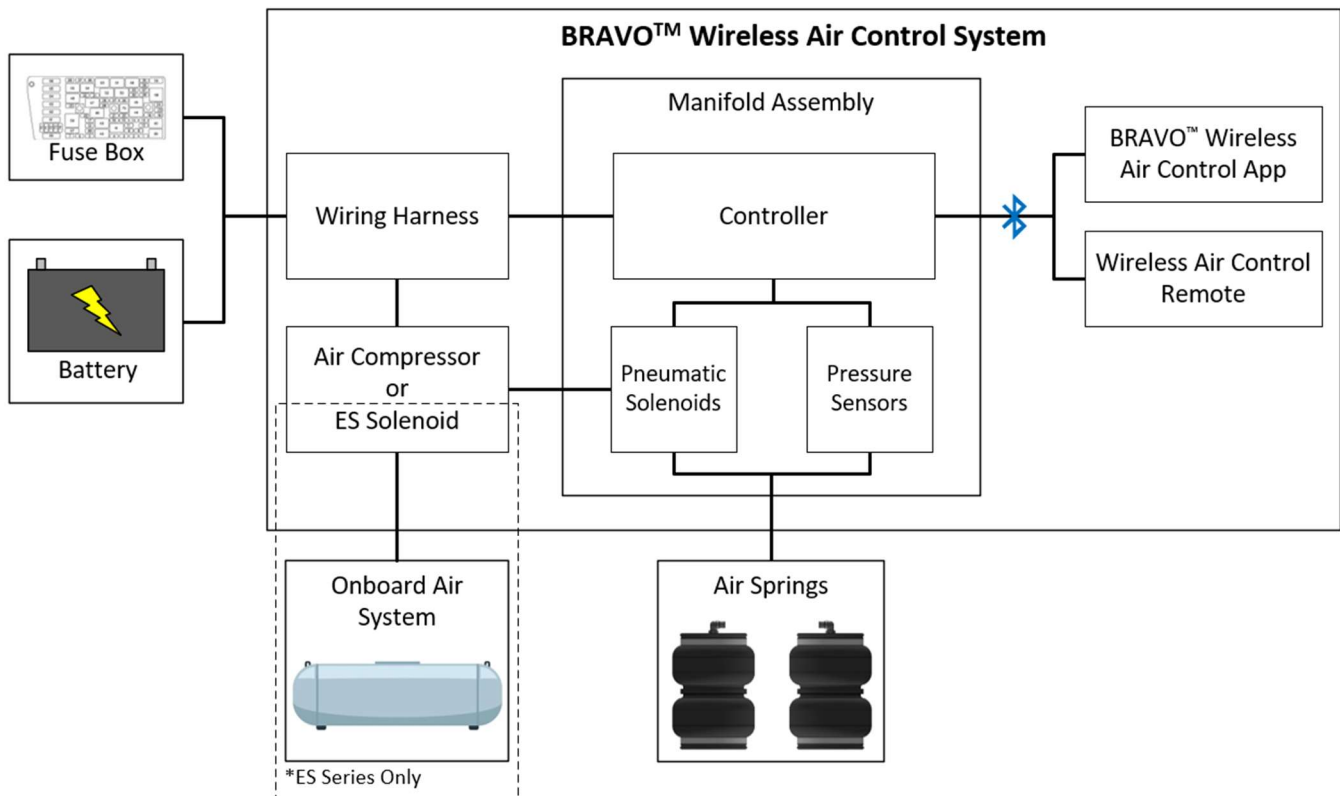
Product Highlights

- Universal fitment which integrates into any air suspension system
- Compatible with Android™ 7.1+ or Apple™ iOS™ 10.3+ mobile devices
- Capable of achieving fill pressures up to 1034 kPa [150 psi]
- Independent and Simultaneous air spring control
- Three presets for rapid air pressure adjustment
- Real time pressure feedback
- Direct-Drive air compressors up to 30 Amps
- Duty cycle monitoring and protection
- Sealed and waterproof compressor and manifold assembly
- Pre-installed D.O.T. Push-to-Connect air fittings for reduced installation time
- No drilling or vehicle modification required

All information contained in this document is for reference only, subject to change without notice.



SYSTEM DIAGRAM



ORDERING INFORMATION

The BRAVO™ Wireless Air Control system is available in various configurations to tailor for your specific application. These options are detailed in the table below.

Kit Number	Compressor Series	Quick Mount	Includes Remote
HP30000-ES	N/A	Yes	No
HP30000-ES-R		Yes	Yes
HP30009-NT	90 Series	No	No
HP30009-NT-QM		Yes	No
HP30009-NT-QM-R		Yes	Yes
HP30030-NT	325 Series	No	No
HP30030-NT-QM		Yes	No
HP30030-NT-QM-R		Yes	Yes
HP30040-NT	425 Series	No	No
HP30040-NT-QM		Yes	No
HP30040-NT-QM-R		Yes	Yes

~All pressure values indicated in 'gauge' pressure

All information contained in this document is for reference only, subject to change without notice.

BRAVO™ WIRELESS AIR CONTROL MANIFOLD ASSEMBLY

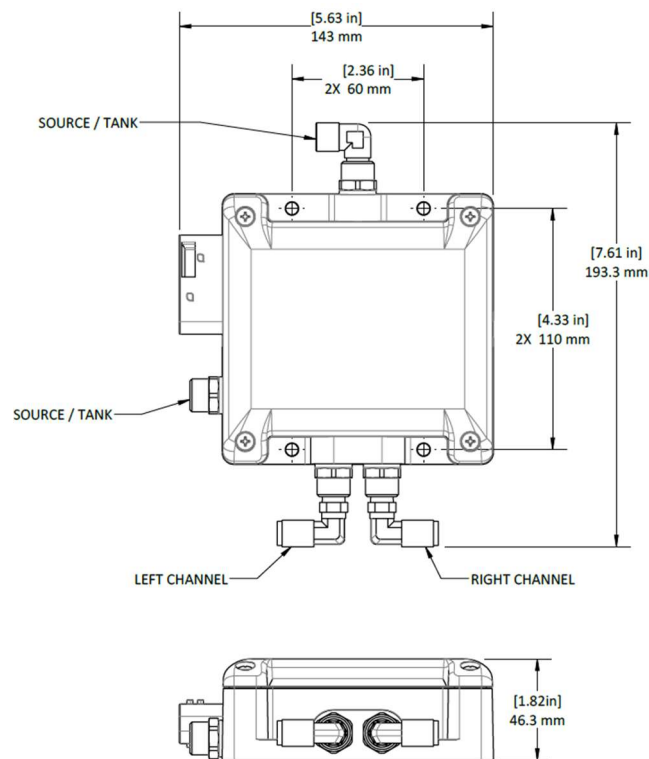
The heart of all BRAVO™ Wireless Air Control systems is the integrated manifold with its control board, air control solenoids, and pressure sensors. The manifold assembly is used across both Quick Mount and non-Quick Mount kits. In non-Quick Mount kits, the manifold and air compressor are supplied independently without a bracket assembly, mounting rails, or U-bolts.

Specifications

Maximum Input/Output Pressure	1034 kPa [150 psi]
Pressure Feedback Resolution	±6.89 kPa [1 psi]
Ambient Operating Temperature Range	-40°C to +85°C [-40°F to +185°F]
Ingress Protection	IP67*

Nominal Supply Voltage	12 VDC (9 to 14 VDC)
Idle Current Consumption	39 mA ± 10% @ 13.8 V
Maximum Current Consumption	1.2 A**

Weight	0.73 kg [1.60 lbs]
--------	--------------------



*Only applicable when mated with TE Heavy Duty Sealed Connector Series 12-Position connector (1-1670901-1) and applicable wire seals. All kits include a sealed wiring harness with this connection, see section: "WIRING HARNESS".

**Activation current consumption is only applicable to manifold internals. Actual current consumption will vary based on power of air compressor driven by system.

~All pressure values indicated in 'gauge' pressure

All information contained in this document is for reference only, subject to change without notice.



ES SERIES QUICK MOUNT ASSEMBLY

- Compatible with any on-board or on-demand air system and air suspension up to 1034 kPa [150 psi]

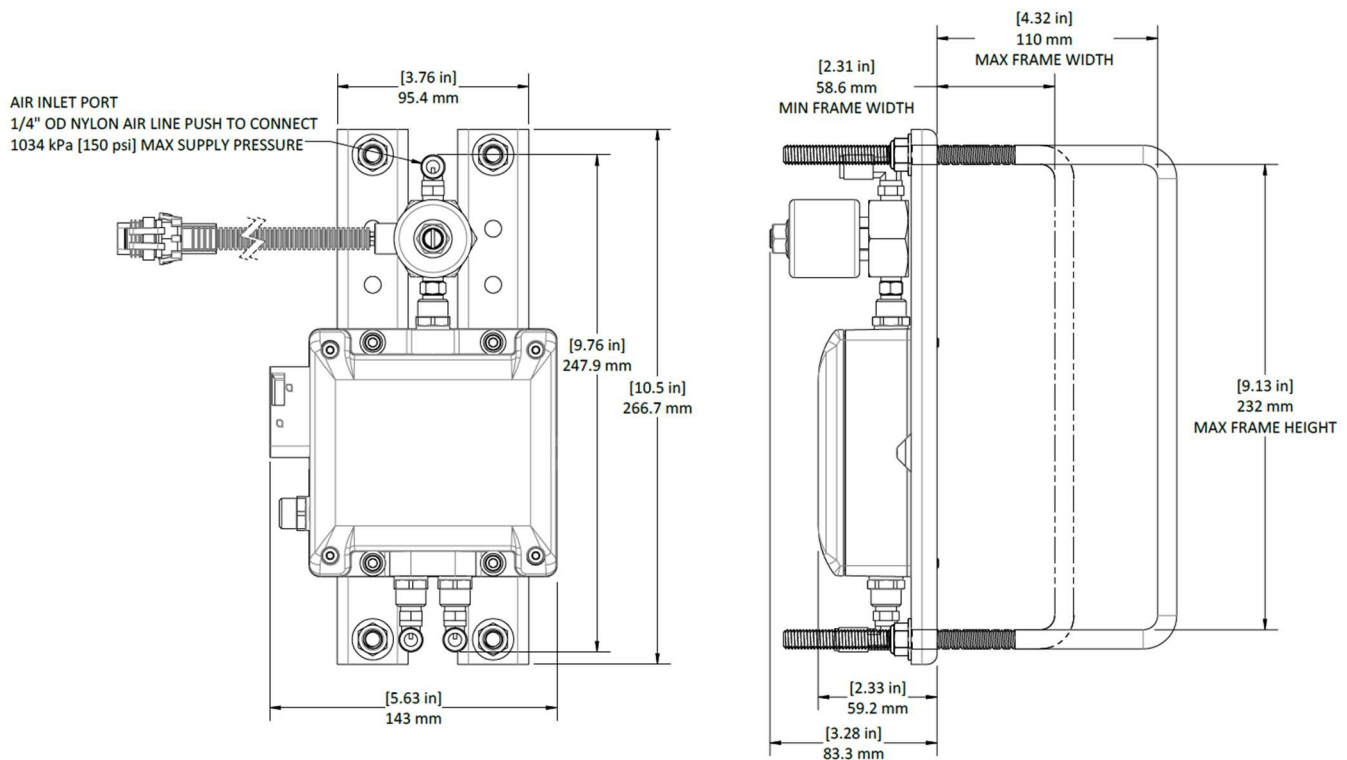
Specifications

Maximum Input/Output Pressure	1034 kPa [150 psi]
Ambient Operating Temperature Range	-40°C to +70°C [-40°F to +158°F]
Ingress Protection	IP67 Controller and Electrical Connectors

Nominal Supply Voltage	12 VDC (9 to 14 VDC)
Maximum Current Draw	2.7 A

Weight	3.00 kg [6.62 lbs]
--------	--------------------

Dimensions



~All pressure values indicated in 'gauge' pressure

All information contained in this document is for reference only, subject to change without notice.



90 SERIES QUICK-MOUNT ASSEMBLY

- Pacbrake Standard Duty Air Compressor

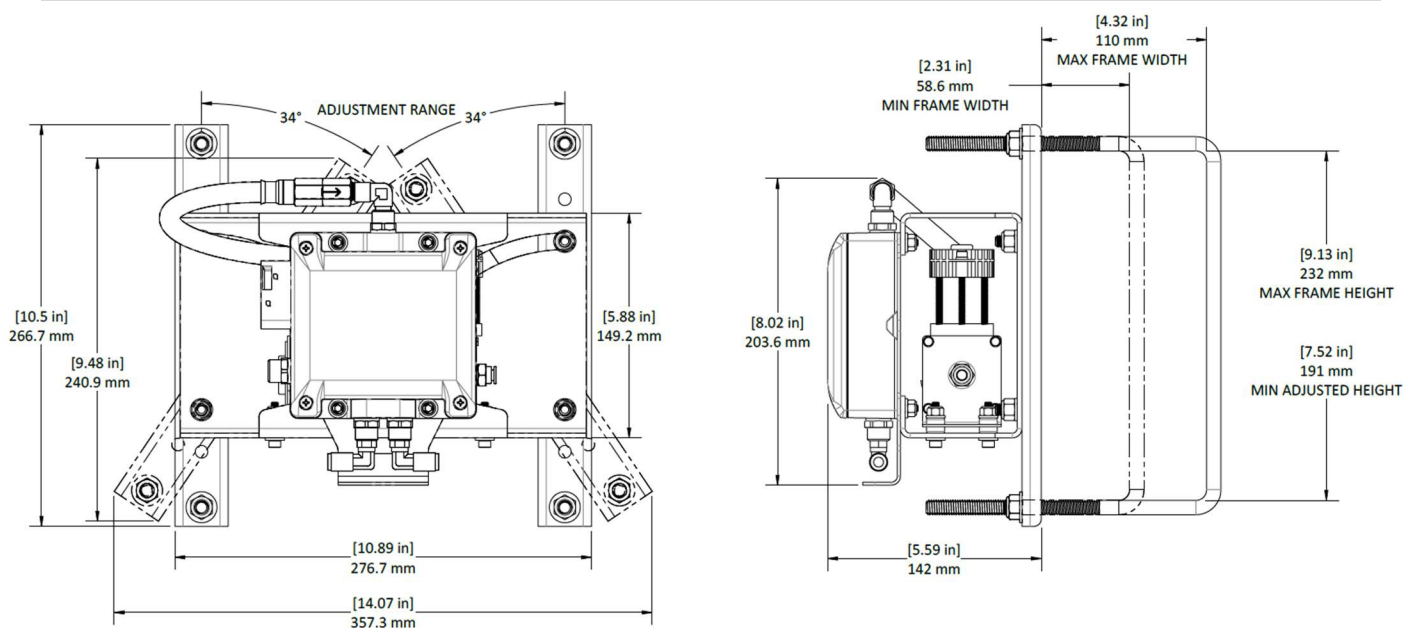
Specifications

Maximum Working Pressure	827.4 kPa [120 psi]
Maximum Duty Cycle	9% @ 689.5 kPa [100 psi]
Maximum Continuous Run Time	5 Minutes ON / 55 Minutes OFF
Rated Flow	29 L/min [1.02 CFM] at 0 kPa [0 psi]
Inflation Time (Double Convuluted Springs, 5000lb Kit)	0 – 689.5 kPa [0 – 100 psi] in 135 seconds
Ambient Operating Temperature Range	-40°C to +70°C [-40°F to +158°F]
Ingress Protection	IP67 Compressor with remote mounted intake filter

Nominal Supply Voltage	12 VDC (9 to 14 VDC)
Maximum Current Draw	12.5 A

Weight	4.95 kg [10.9 lbs]
--------	--------------------

Dimensions



Note: A non-quick mount kit (compressor + manifold only, no bracket assembly) is also available. Specifications and performance are identical. See “NON-QUICK-MOUNT ASSEMBLIES” section for compressor geometry.

~All pressure values indicated in ‘gauge’ pressure

All information contained in this document is for reference only, subject to change without notice.



325 SERIES QUICK-MOUNT ASSEMBLY

- Pacbrake Heavy Duty Air Compressor

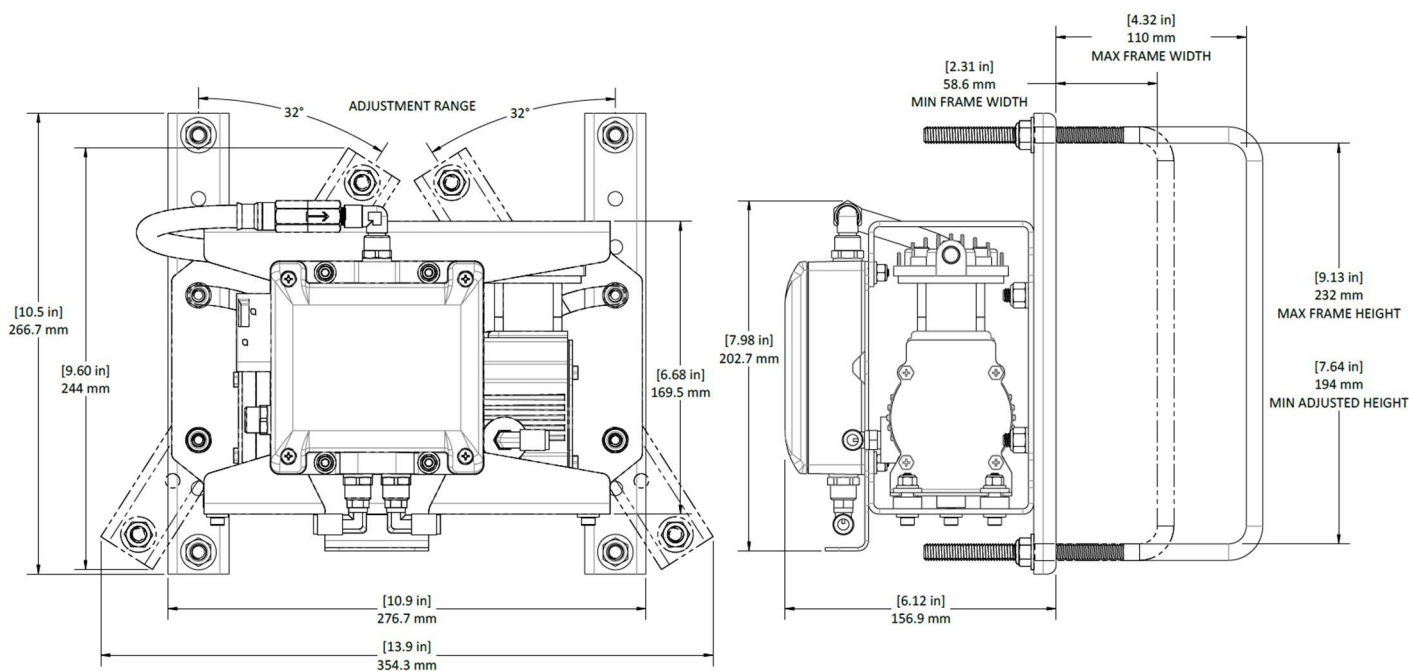
Specifications

Maximum Working Pressure	1034 kPa [150 psi]
Maximum Duty Cycle	33% @ 689.5 kPa [100 psi]
Maximum Continuous Run Time	20 Minutes ON / 40 Minutes OFF
Rated Flow	31.1 L/min [1.1 CFM] at 0 kPa [0 psi]
Inflation Time (Double Convuluted Springs, 5000lb Kit)	0 – 689.5 kPa [0 – 100 psi] in 95 seconds
Ambient Operating Temperature Range	-40°C to +70°C [-40°F to +158°F]
Ingress Protection	IP67 Compressor with remote mounted intake filter

Nominal Supply Voltage	12 VDC (9 to 14 VDC)
Maximum Current Draw	18.5 A

Weight	6.71 kg [14.8 lbs]
--------	--------------------

Dimensions



Note: A non-quick mount kit (compressor + manifold only, no bracket assembly) is also available. Specifications and performance are identical. See “NON-QUICK-MOUNT ASSEMBLIES” section for compressor geometry.

~All pressure values indicated in ‘gauge’ pressure

All information contained in this document is for reference only, subject to change without notice.



425 SERIES QUICK-MOUNT ASSEMBLY

- Pacbrake Extreme Duty Air Compressor

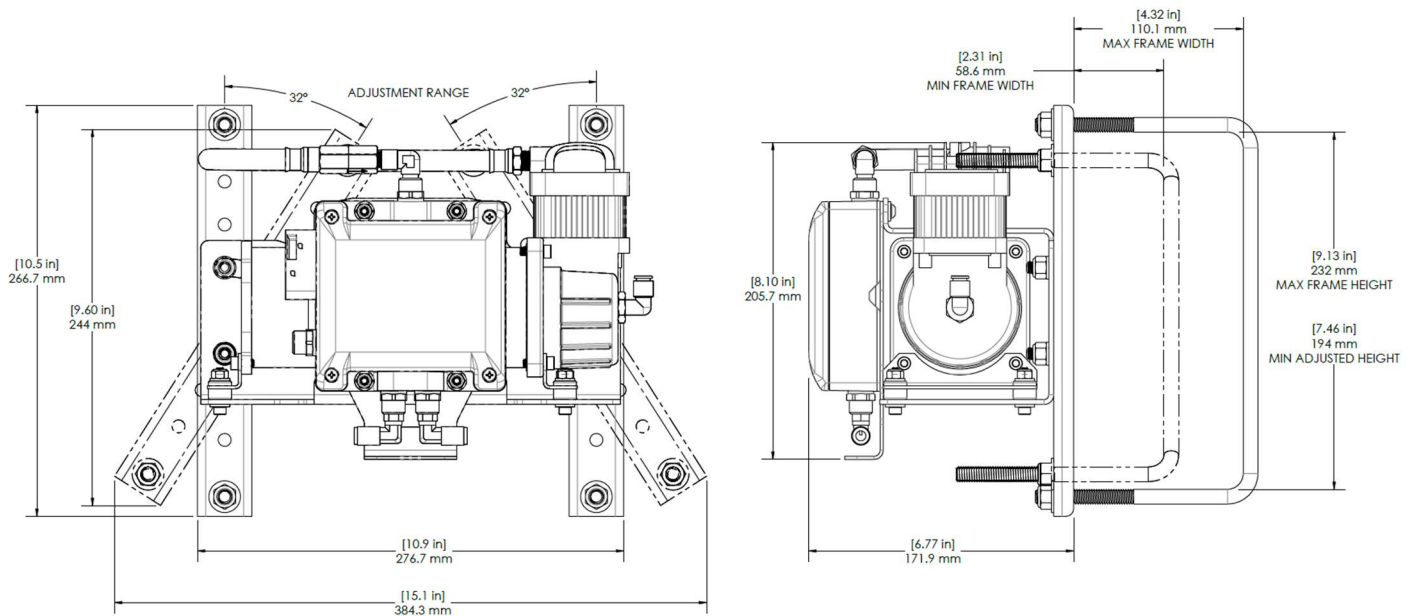
Specifications

Maximum Working Pressure	1034 kPa [150 psi]
Maximum Duty Cycle	100% @ 689.5 kPa [100 psi] 50% @ 1379 kPa [200 PSI]
Maximum Continuous Run Time	Continuous @ 689.5 kPa [100 psi] 30 Minutes ON / 30 Minutes OFF @ 1379 kPa [200 psi]
Rated Flow	49.5 L/min [1.75 CFM] at 0 kPa [0 psi]
Inflation Time (Double Convuluted Springs, 5000lb Kit)	0 – 689.5 kPa [0 – 100 psi] in 50 seconds
Ambient Operating Temperature Range	-40°C to +70°C [-40°F to +158°F]
Ingress Protection	IP67 Compressor with remote mounted intake filter

Nominal Supply Voltage	12 VDC (9 to 14 VDC)
Maximum Current Draw	22.5 A

Weight	8.40 kg [18.5 lbs]
---------------	--------------------

Dimensions



Note: A non-quick mount kit (compressor + manifold only, no bracket assembly) is also available. Specifications and performance are identical. See “NON-QUICK-MOUNT ASSEMBLIES” section for compressor geometry.

~All pressure values indicated in ‘gauge’ pressure

All information contained in this document is for reference only, subject to change without notice.



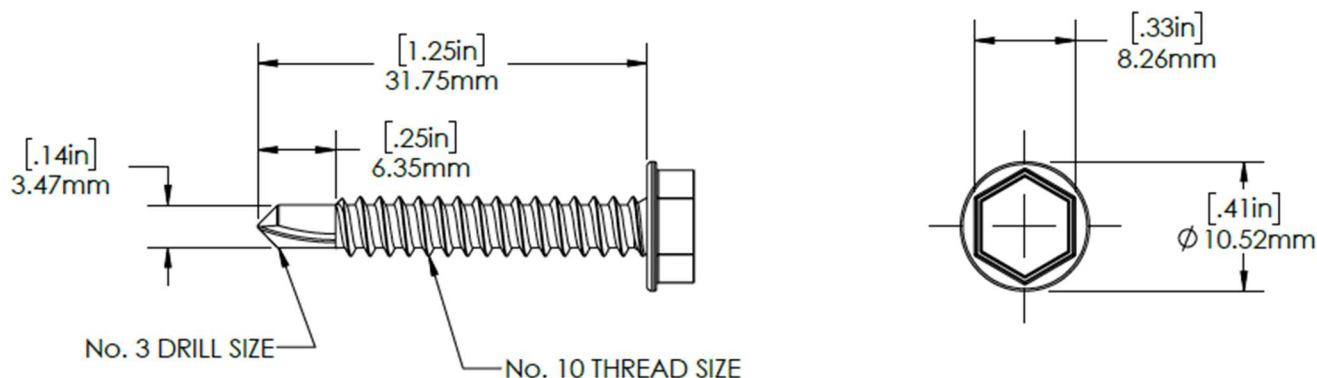
NON-QUICK-MOUNT ASSEMBLIES

Non-quick-mount assemblies contain the BRAVO™ wireless air control manifold assembly and air compressor as individual parts with no additional mounting bracketry. Components are secured using self-drilling screws (included in kit), allowing for a more versatile and customizable installation.

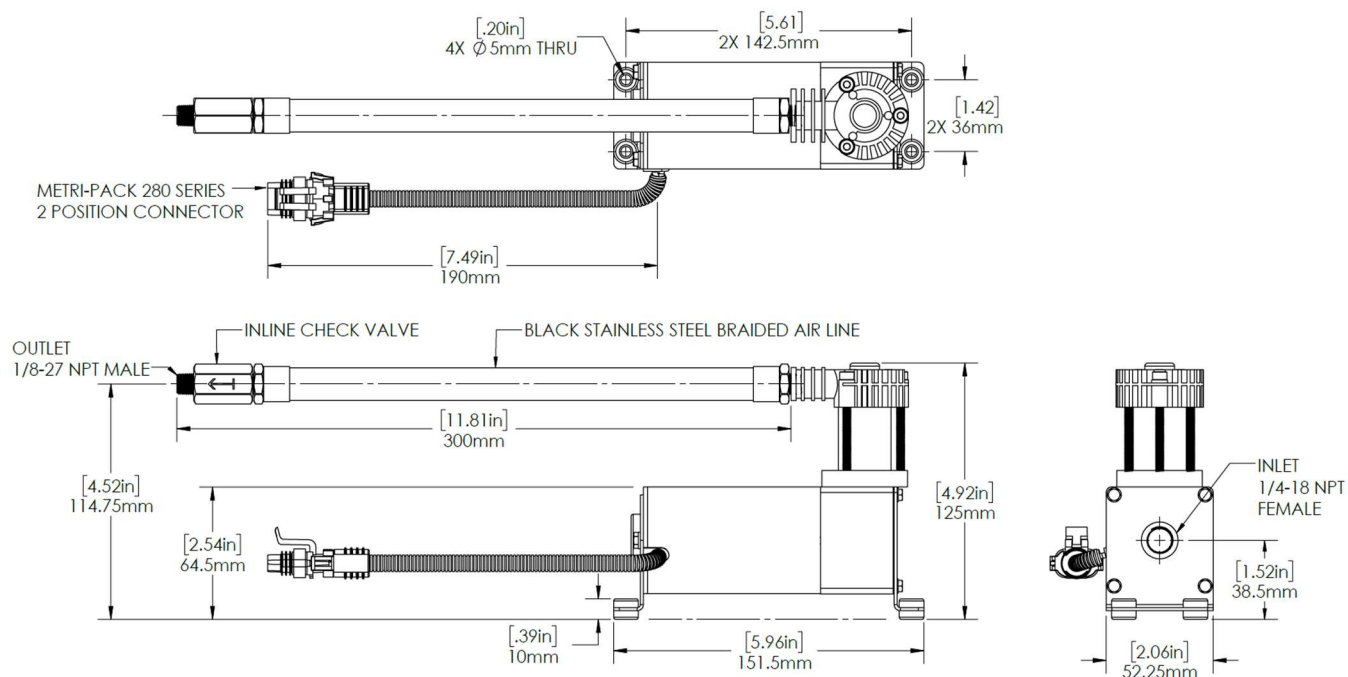
Mounting Screws

Type
Finish

Self-Drilling / Thread Forming
Zinc Plating

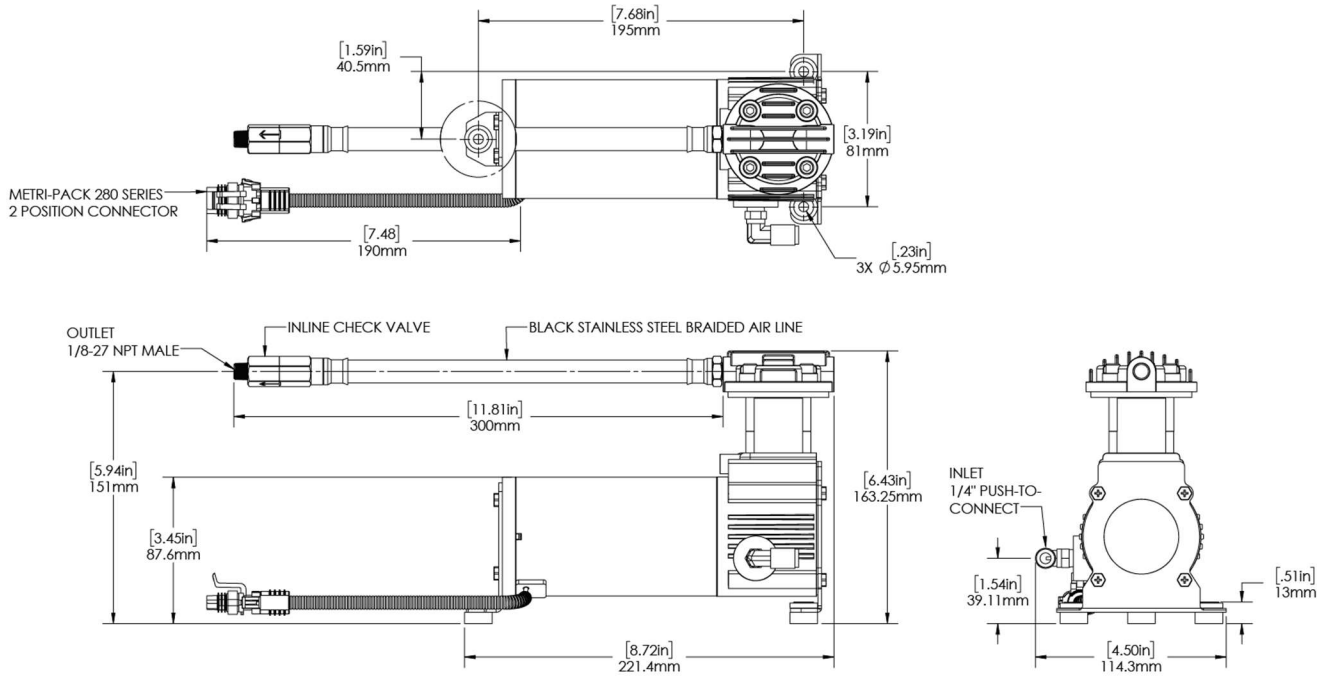
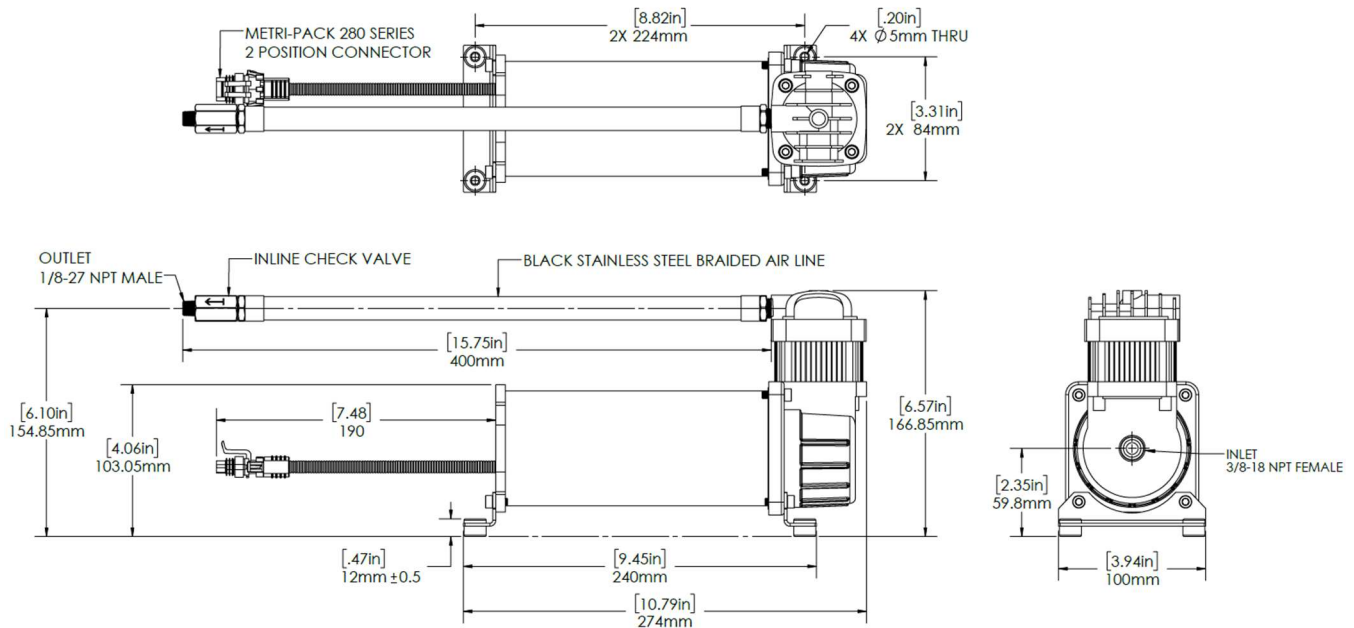


Dimensions – 90 Series Compressor



~All pressure values indicated in 'gauge' pressure

All information contained in this document is for reference only, subject to change without notice.

**Dimensions – 325 Series Compressor****Dimensions – 425 Series Compressor**

~All pressure values indicated in 'gauge' pressure

All information contained in this document is for reference only, subject to change without notice.



WIRING HARNESS

Common harness supplies power and sensor connectivity. Includes outputs for digital gauge monitoring

Maximum Current Rating

30 A

Connectors

IP67 Sealed

Wiring

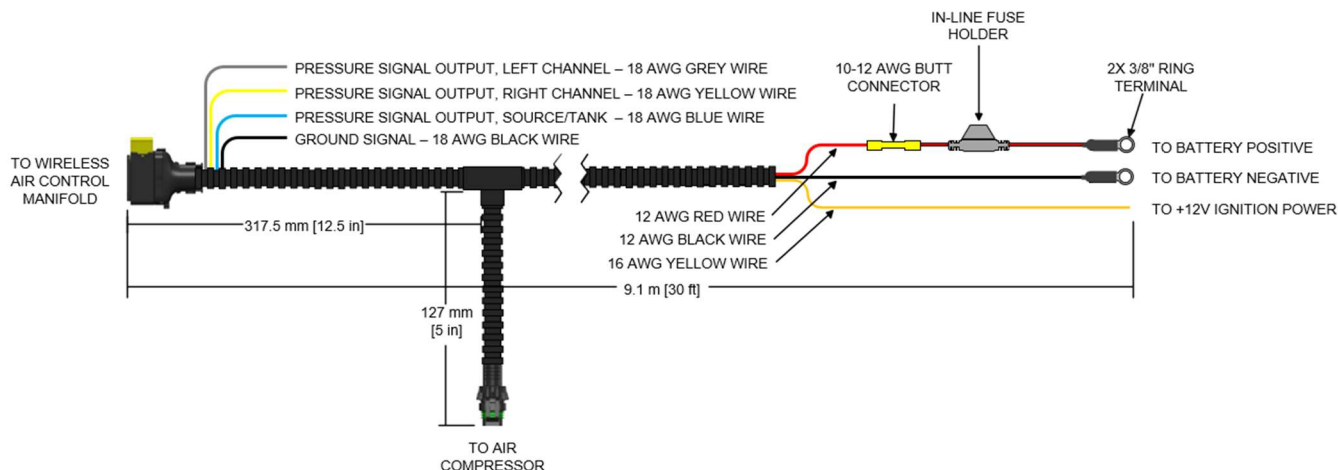
SAE J1128, Stranded Conductor, GXL

Temperature Rating

-40°C to +120°C [-40°F to +248°F]

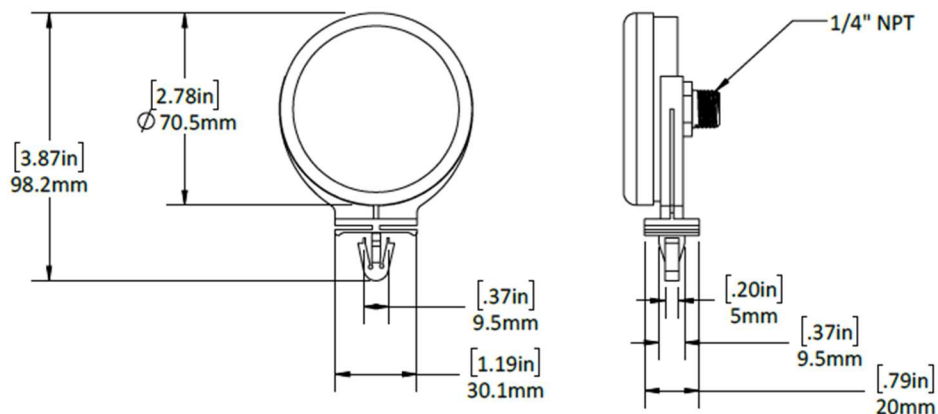
Pressure Signals

0.5 – 4.5V, 0 – 200 psi ratiometric output



REMOTE AIR FILTER

Mount the remote air filter in a clean and dry location to protect the internal compressor components from dirt, dust, and other contaminants.



Part Number	Mounting Hole Size
C241	Ø10 mm [0.39 in]

~All pressure values indicated in 'gauge' pressure

All information contained in this document is for reference only, subject to change without notice.



FUSE TAPS

Wire Gauge	16 AWG
Current Rating	15 A
Ambient Operating Temperature Range	-40°C to +120°C [-40°F to +248°F]
Connection Type	14-16 AWG Wire Butt Connector



Part Number	Type
M8998	Mini Fuse (APM/ATM)
M8999	Micro2 Fuse (APT/ATR)

FUSES

Type	Fast Acting
Voltage Rating	32 VDC
Temperature Rating	-40°C to +125°C [-40°F to +257°F]
Standard	SAE 2741 / ISO 8820



Part Number	Type	Rating	Color
M9044	Micro2 (APT/ATR)	10 A	Red
M8172	Mini (APM/ATM)	10 A	Red
M8180	Mini (APM/ATM)	30 A	Green

SAE NYLON TUBING

Tube OD	6.35 mm [1/4"]
Maximum Operating Pressure	1378 kPa [200 psi]
Ambient Operating Temperature Range	-40°C to +93°C [-40°F to +200°F]
Specification	SAE J844 Type A / DOT FMVSS 49CFR571.106



Part Number	Color
M8280	Black

~All pressure values indicated in 'gauge' pressure

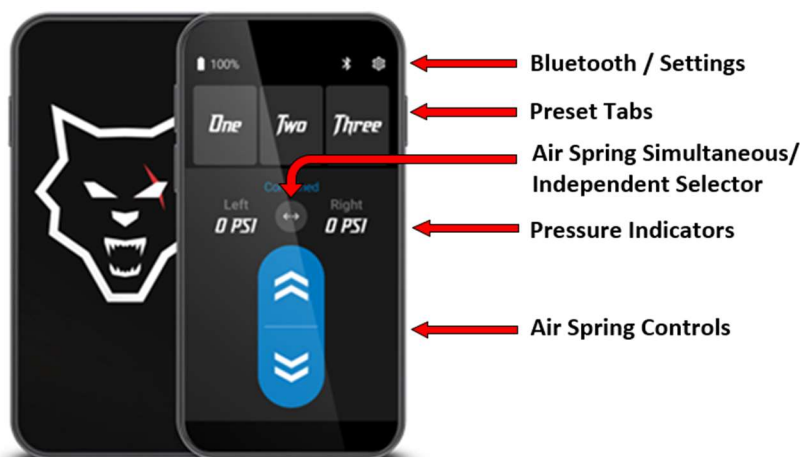
All information contained in this document is for reference only, subject to change without notice.

WIRELESS AIR CONTROLS REMOTE

Pacbrake's Wireless Air Controls Remote works with BRAVO™ Wireless Air Control in place of a phone and downloadable App. Remote includes a USB-C charging cable, screen protector, protective case.

Specifications

Operating System	Android 10
Connection Type	Bluetooth 4.0 Low Energy
Connection Range	9.14 m [30 ft]
User Interface	3" Capacitive Touchscreen Display
Battery Size	2000 mAh
Charging Connection Type	USB Type C
Charging Specification	USB BC 1.2 – 5V/1.5A



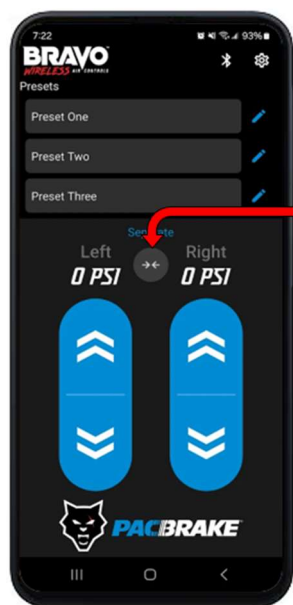
Function	Usage
Air Spring Controls	Press and hold Inflation (+) or Deflation (-) to adjust pressure in air springs Press (→←) to switch between independent or simultaneous control
Pressure Indicator	Provides real time feedback of air pressure in air springs in PSI
Presets Tab	Press and hold save current pressure value(s) as a preset Press and release to recall saved preset pressure
Bluetooth Toggle	Tap to manually connect or disconnect to wireless controller
Settings Button	Press to access app and system settings: <ul style="list-style-type: none"> • Pressure Units (PSI/kPa) • Channel Mode (Single/Dual) • Pressure Sensor Calibration

~All pressure values indicated in 'gauge' pressure

All information contained in this document is for reference only, subject to change without notice.

**BRAVO™ WIRELESS AIR CONTROL APP**

Pacbrake's BRAVO™ Wireless Air Control App allows users to adjust air spring pressure from their mobile device. The application is compatible with Android™ 7.1+ or Apple™ iOS™ 10.3+ devices and is available for download on the Google Play Store and Apple App Store™.

← **Bluetooth / Settings**← **Preset Tabs**← **Air Spring Simultaneous/
Independent Selector**← **Pressure Indicators**← **Air Spring Controls**

Function	Usage
Air Spring Controls	Press and hold Inflation (+) or Deflation (-) to adjust pressure in air springs Press (→←) to switch between independent or simultaneous control
Pressure Indicator	Provides real time feedback of air pressure in air springs in PSI
Presets Tab	Press and edit icon to name/save current pressure value(s) as a preset Press and release to recall saved preset pressure
Bluetooth Toggle	Illuminates when successful connection is established Tap to manually connect or disconnect to wireless controller
Settings Button	Press to access app and system settings: <ul style="list-style-type: none"> • Pressure Units (PSI/kPa) • Channel Mode (Single/Dual) • Air Compressor Type • Pressure Sensor Calibration

Legal

- Apple and the Apple logo are trademarks of Apple Inc., registered in the U.S. and other countries. App Store is a service mark of Apple Inc., registered in the U.S. and other countries.
- Google Play and the Google Play logo are trademarks of Google LLC
- Android is a trademark of Google LLC

^All pressure values indicated in 'gauge' pressure

All information contained in this document is for reference only, subject to change without notice.