

- Adjust your air springs with your Android™ 4.2+ mobile device
- Three presets for rapid adjustment
- Independent & simultaneous air spring control
- Real time pressure feedback
- Easy installation – can be completed within 1 hour.
 - Preassembled control board & harness.
 - No wires or airlines routed into the cab of the vehicle.
 - No drilling or vehicle modification required.
- Universal fit
 - Bolts onto the frame rail of most truck currently on the market.
 - Integrates into any onboard air, and air suspension system.
- No limitations on preset or fill pressures up to 150 psi
- Robust air solenoids, 13 years of validation
- Two year warranty



Maximum Air Pressure	10.3 bar (gauge) [150 psig]
Continuous Air Temperature	-40°C to +85°C [-40°F to +248°F]
Ambient Temperature Range	-40°C to +85°C [-40°F to +248°F]
Supply Voltage	12 VDC Switched Ignition
Current Draw (Standby Mode)	35 mA
Current Draw (Bluetooth Connected)	80 mA
Current Draw (Solenoids)	1.5A ea.

Mobile Device Operating System	Android 4.2 or Newer (Jellybean)
Pressure Feedback Units	PSI
Pressure Feedback Accuracy	±1

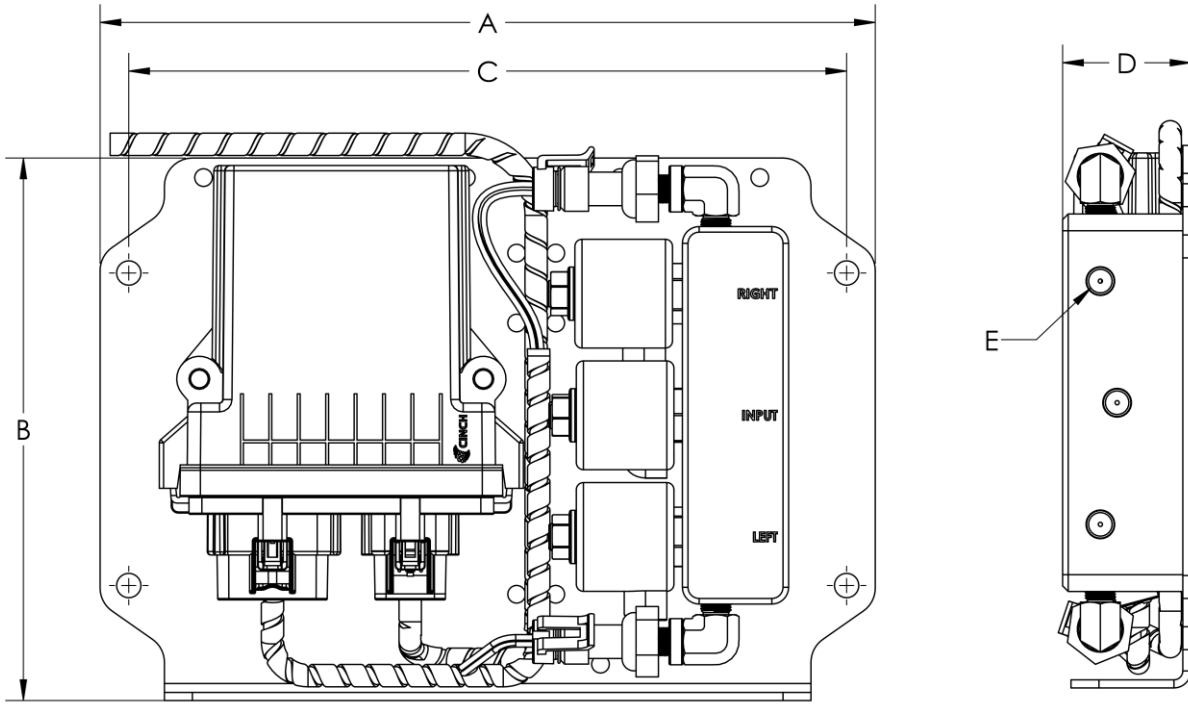
Ingress Protection (Weatherproof)	IP67 Controller and Connectors
--	--------------------------------

Maximum Frame Size* (WxH)	4.750 x 9.125" [120 x 232 mm]
----------------------------------	-------------------------------

*Frame size refers to the cross sectional dimensions of the frame. At the time of this release, 4.750" x 9.125" is sufficient for any pickup truck currently on the market.

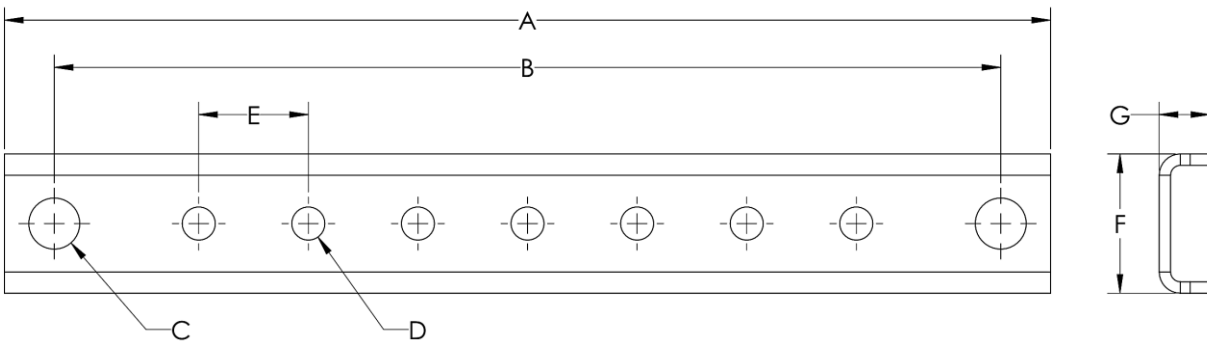
All information contained in this document is for reference only, subject to change without notice.

Control Board



A	B	C	D	WEIGHT	HARNESS LENGTH
277 mm 10.9 in	198 mm 7.8 in	257 mm 10.1 in	46 mm 1.8 in	3.4 kg 7.4 lb	7.6m 25 ft

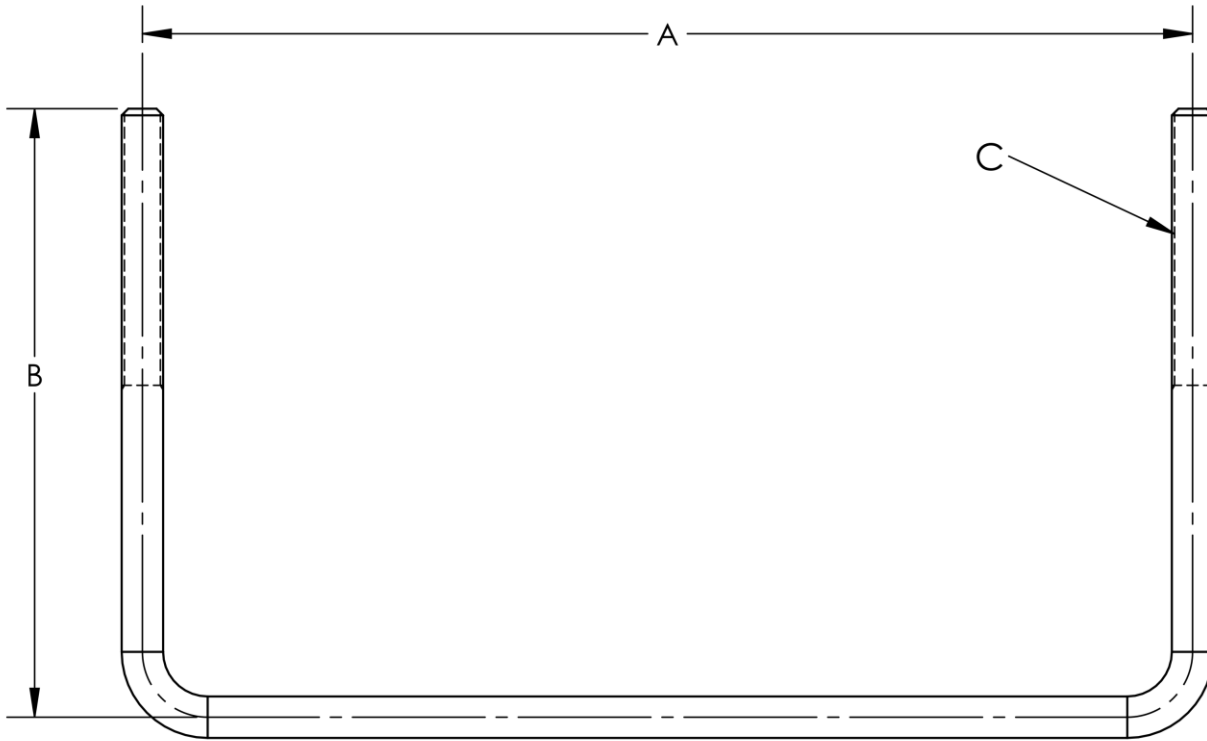
Frame Bracket



A	B	C	D	E	F	G
266 mm 10.5 in	241 mm 9.5 in	13 mm .512 in	8.4 mm .332 in	28 mm 1.1 in	35.4 mm 1.4 in	13 mm .508 in

All information contained in this document is for reference only, subject to change without notice.

U-Bolt



A	B	C	Grade
241 mm 9.5 in	140 mm 5.5 in	3/8"-16 UNC	SAE No. 2 Equivalent

Legal

Google Play and the Google Play logo are trademarks of Google LLC

Android is a trademark of Google LLC

The Android robot is reproduced or modified from work created and shared by Google and used according to terms described in the Creative Commons 3.0 Attribution License.

All information contained in this document is for reference only, subject to change without notice.